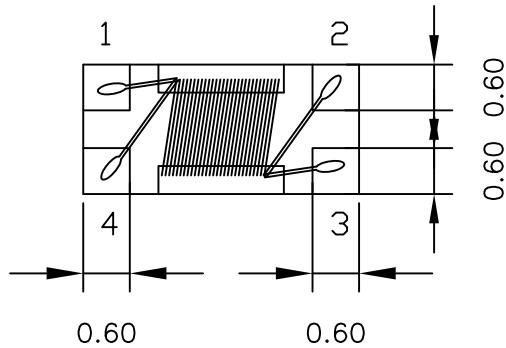
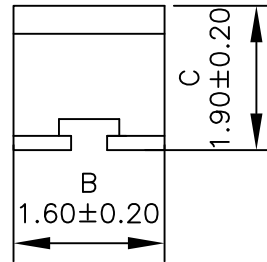
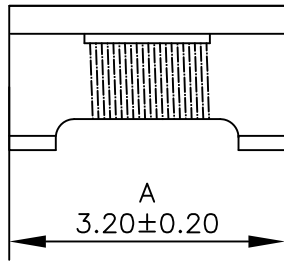
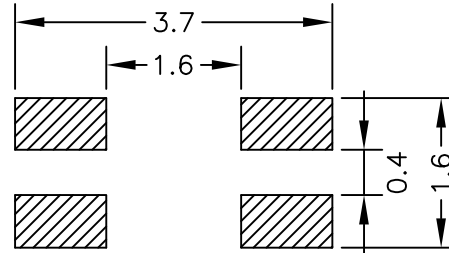


1. Mechanical Dimensions:

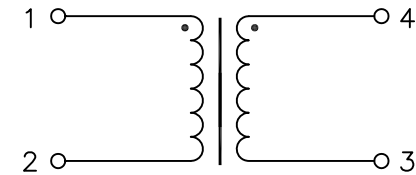


Bottom view



Pad layout

2. Schematic:



3. Electrical Specifications:

Common Mode Impedance: 330 Ohms Typ @10MHz
 1100 Ohms Typ @100MHz
 2425 Ohms Typ @500MHz

Rated Current: 500mA MAX

Inductance: 623 nH Min

DCR: 0.44 Ohms Max

Isolation: 250 Vrms

Notes:

1. Solderability: Leads shall meet MIL-STD-202G, Method 208H for solderability.
2. Flammability: UL94V-0
3. ASTM oxygen index: > 28%
4. Insulation System: Class F 155°C. UL file E151556
5. Operating Temperature Range: All listed parameters are to be within tolerance from -40°C to +85°C
6. Storage Temperature Range: -55°C to +125°C
7. Aqueous wash compatible
8. SMD Lead Coplanarity: ±0.004"(0.102mm)
9. Electrical and mechanical specifications 100% tested
10. RoHS Compliant Component
11. Outsourced item processed & controlled under XFMRS QA system

DOC. REV: A/1

XFMRS Inc www.XFMRS.com	Title: Common Mode Choke		
	UNLESS OTHERWISE SPECIFIED TOLERANCES: .xx ±0.20 Dimensions in MM	P/N: XFWCMC321619-112	REV A
	DWN.	Yuan	Feb-15-16
	CHK.	YK Liao	Feb-15-16
SHEET 1 OF 1	APP.	GL	Feb-15-16