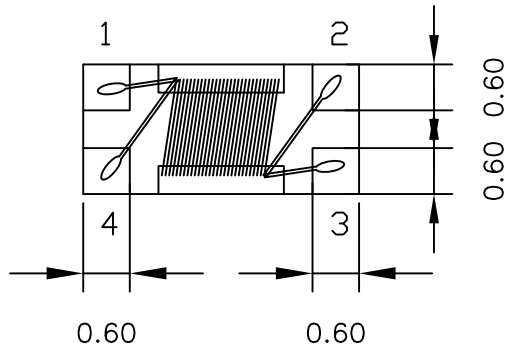
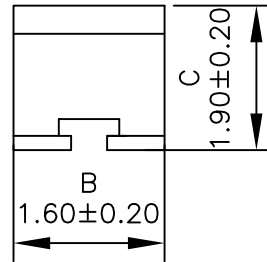
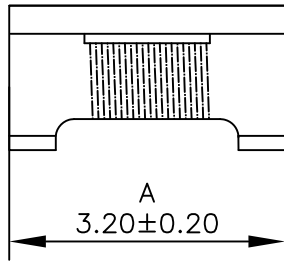
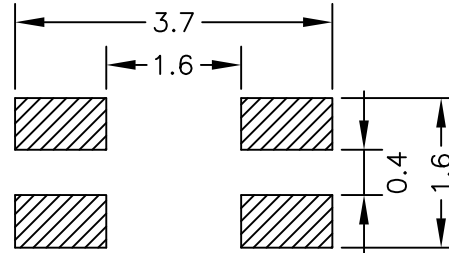


## 1. Mechanical Dimensions:

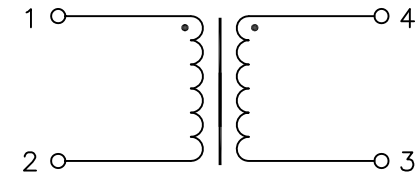


Bottom view



Pad layout

## 2. Schematic:



## 3. Electrical Specifications:

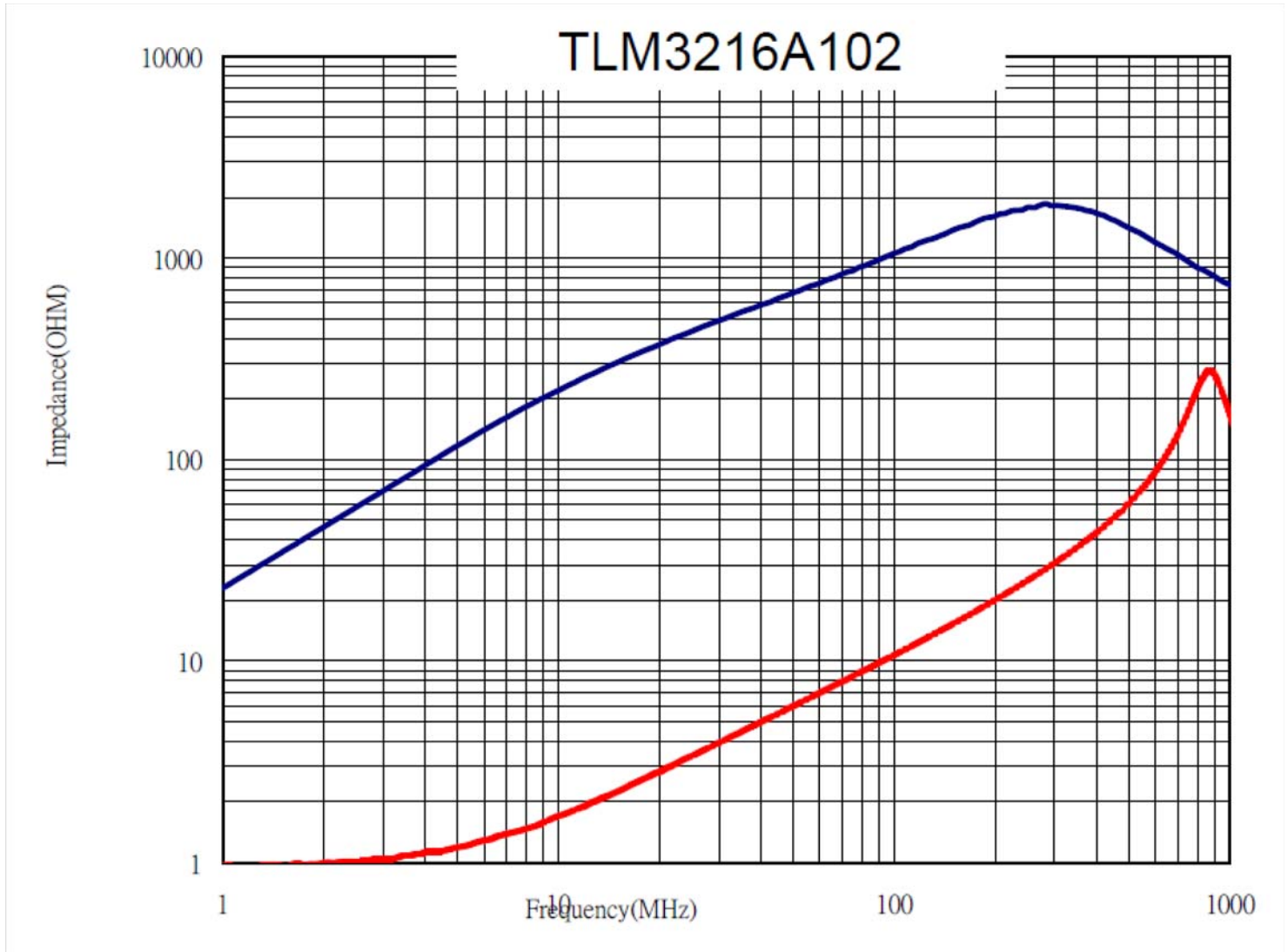
Common Mode Impedance: 1000 Ohms Typ @100MHz  
 Rated Current: 230mA  
 Rated Voltage: 50Vdc  
 DCR: 1.00 Ohms Max  
 Withstand Voltage: 125Vdc

### Notes:

1. Solderability: Leads shall meet MIL-STD-202G, Method 208H for solderability.
2. Flammability: UL94V-0
3. ASTM oxygen index: > 28%
4. Insulation System: Class F 155°C. UL file E151556
5. Operating Temperature Range: All listed parameters are to be within tolerance from -40°C to +85°C
6. Storage Temperature Range: -55°C to +125°C
7. Aqueous wash compatible
8. SMD Lead Coplanarity: ±0.004"(0.102mm)
9. Electrical and mechanical specifications 100% tested
10. RoHS Compliant Component
11. Outsourced item processed & controlled under XFMRs QA system

DOC. REV: A/3

<b>XFMRs Inc</b> www.XFMRs.com	Title: <b>Common Mode Choke</b>		
	UNLESS OTHERWISE SPECIFIED TOLERANCES: .xx ±0.20 Dimensions in MM	P/N: XFWCMC321619-102	REV A
	DWN.	Yuan	Aug-28-14
	CHK.	YK Liao	Aug-28-14
SHEET 1 OF 2	APP.	DDC	Aug-28-14



DOC. REV: A/3

<b>XFMRs Inc</b> www.XFMRS.com	Title: <b>Common Mode Choke</b>		
	UNLESS OTHERWISE SPECIFIED TOLERANCES: .xx ±0.20 Dimensions in MM	P/N: XFWCMC321619-102	REV A
SHEET 2 OF 2	DWN.	Yuan	Aug-28-14
	CHK.	YK Liao	Aug-28-14
	APP.	DDC	Aug-28-14

**PROPRIETARY**

Document is the property of XFMRs Group & is not allowed to be duplicated without authorization.