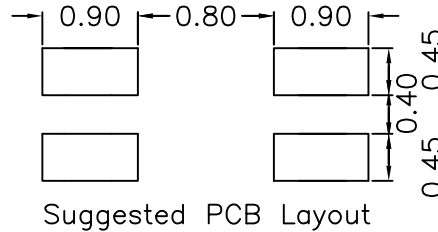
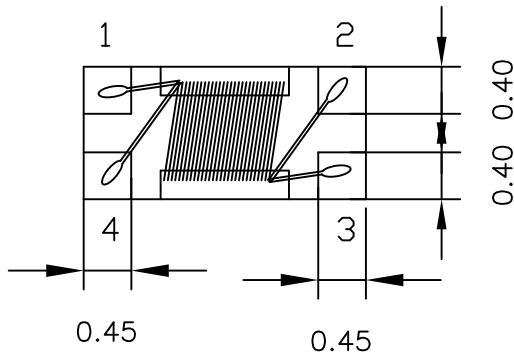
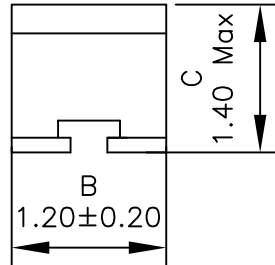
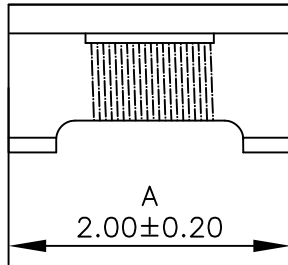
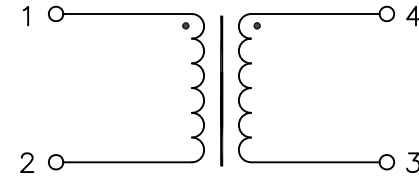


1. Mechanical Dimensions:



2. Schematic:



3. Electrical Specifications: @25°C

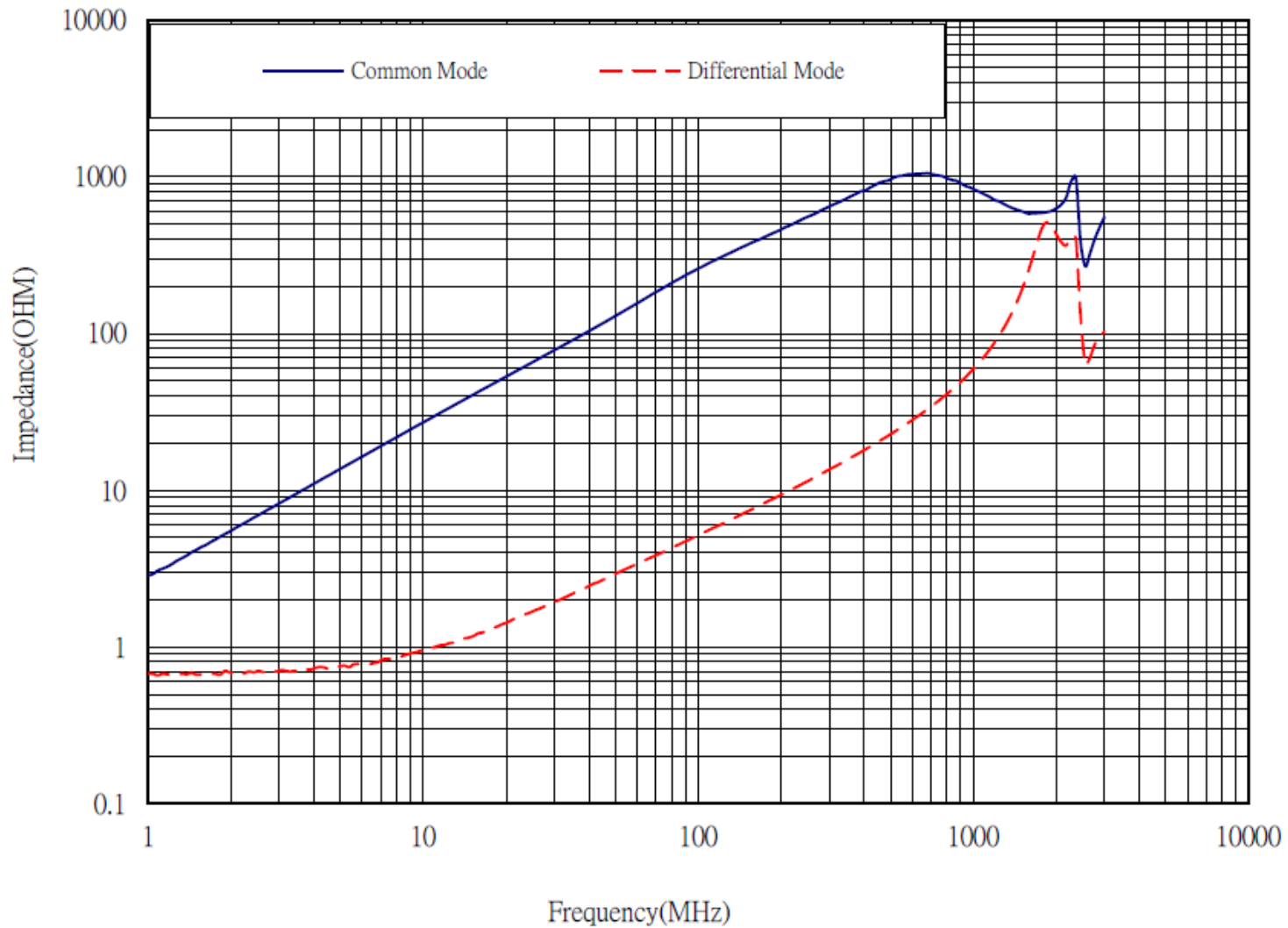
Common Mode Impedance: 260 Ohms Typ @100MHz
 Rated Current: 300mA
 Rated Voltage: 50Vdc
 DCR: 0.400 Ohms Max
 Insulation Resistance: 10 MOhm Min
 Withstand Voltage: 125Vdc

Notes:

1. Solderability: Leads shall meet MIL-STD-202G, Method 208H for solderability.
2. Flammability: UL94V-0
3. ASTM oxygen index: > 28%
4. Insulation System: Class F 155°C. UL file E151556
5. All listed parameters are to be within tolerance from -40°C to +125°C unless otherwise noted.
6. Storage Temperature Range: -55°C to +125°C
7. Aqueous wash compatible
8. SMD Lead Coplanarity: ±0.004"(0.102mm)
9. Electrical and mechanical specifications 100% tested
10. RoHS Compliant Component
11. Outsourced item processed & controlled under XFMRs QA system

DOC. REV: A/2

XFMRs Inc www.XFMRs.com	Title: Common Mode Choke		
	UNLESS OTHERWISE SPECIFIED TOLERANCES: .xx ±0.20 Dimensions in MM	P/N: XFWCMC201213-261	REV A
SHEET 1 OF 2	DWN.	Xiang	Feb-14-17
	CHK.	YK Liao	Feb-14-17
	APP.	BSJ	Feb-14-17



DOC. REV: A/2

XFMRs Inc www.XFMRs.com	Title: Common Mode Choke		
	UNLESS OTHERWISE SPECIFIED TOLERANCES: .xx ±0.20 Dimensions in MM	P/N: XFWCMC201213-261	REV A
SHEET 2 OF 2	DWN.	Xiang	Feb-14-17
	CHK.	YK Liao	Feb-14-17
	APP.	BSJ	Feb-14-17

PROPRIETARY

Document is the property of XFMRs Group & is not allowed to be duplicated without authorization.