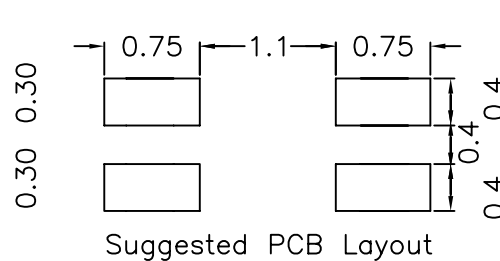
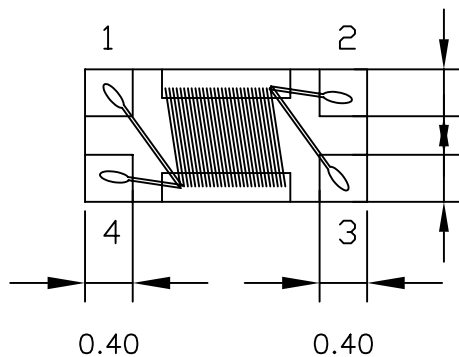
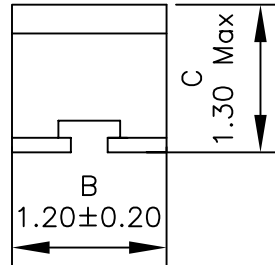
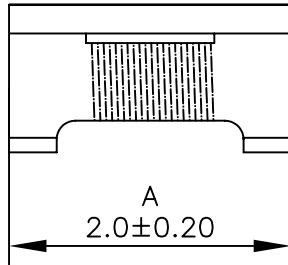
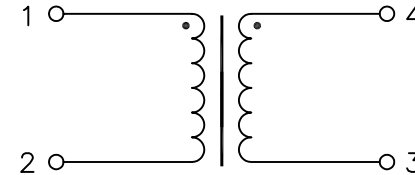


### 1. Mechanical Dimensions:



### 2. Schematic:



### 3. Electrical Specifications:

- Common Mode Impedance: 220 Ohms ± 25% @ 100MHz
- Rated Current: 300mA
- Rated Voltage: 50Vdc
- DCR: 0.40 Ohms Max
- Insulation Resistance: 10 MOhms
- Withstand Voltage: 125Vdc

Notes:

1. Solderability: Leads shall meet MIL-STD-202G, Method 208H for solderability.
2. Flammability: UL94V-0
3. ASTM oxygen index: > 28%
4. Insulation System: Class F 155°C. UL file E151556
5. Operating Temperature Range: All listed parameters are to be within tolerance from -40°C to +85°C
6. Storage Temperature Range: -55°C to +125°C
7. Aqueous wash compatible
8. SMD Lead Coplanarity: ±0.004" (0.102mm)
9. Electrical and mechanical specifications 100% tested
10. RoHS Compliant Component

DOC. REV: A/1

<b>XFMRs Inc</b> www.XFMRs.com		Title: Common Mode Choke	
UNLESS OTHERWISE SPECIFIED TOLERANCES: .xx ±0.20 Dimensions in MM	P/N: XFWCMC201213-221	REV A	
	DWN.	李小锋	Mar-13-08
Scale 2.5:1 SHT 1 OF 1	CHK.	廖玉坤	Mar-13-08
	APP.	BW	Mar-13-08

**PROPRIETARY**

Document is the property of XFMRs Group & is not allowed to be duplicated without authorization.