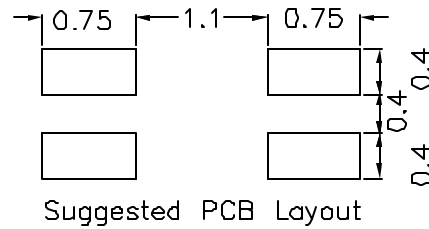
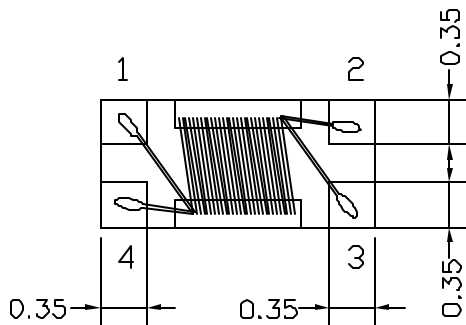
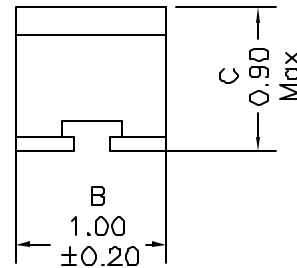
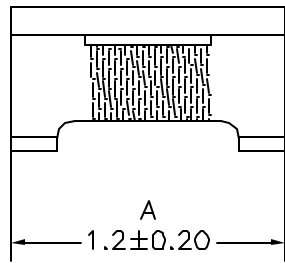
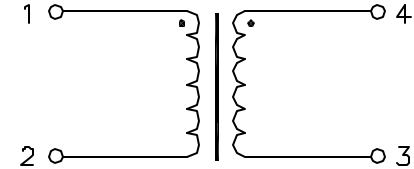


1. Mechanical Dimensions:



2. Schematic:



3. Electrical Specifications:

- Common Mode Impedance: 90 Ohms ± 25% @ 100MHz
- Rated Current: 400mA
- Rated Voltage: 50Vdc
- DCR: 0.30 Ohms Max
- Insulation Resistance: 100 MOhms
- Withstand Voltage: 125Vdc

Notes:

1. Solderability: Leads shall meet MIL-STD-202G, Method 208H for solderability.
2. Flammability: UL94V-0
3. ASTM oxygen index: > 28%
4. Insulation System: Class F 155°C. UL file E151556
5. Operating Temperature Range: All listed parameters are to be within tolerance from -40°C to +85°C
6. Storage Temperature Range: -55°C to +125°C
7. Aqueous wash compatible
8. SMD Lead Coplanarity: ±0.004" (0.102mm)
9. Electrical and mechanical specifications 100% tested
10. RoHS Compliant Component

DOC. REV: A/1

PROPRIETARY Document is the property of XFMRS Group & is not allowed to be duplicated without authorization.

XFMRS Inc www.XFMRS.com		Title: Common Mode Choke	
UNLESS OTHERWISE SPECIFIED TOLERANCES: .xx ±0.20 Dimensions in MM Scale 2.5:1 SHT 1 OF 1	P/N: XFWCMC121009-900		REV A
	DWN.	Feng	Sep-15-11
	CHK.	YK Liao	Sep-15-11
	APP.	Joe Huff	Sep-15-11