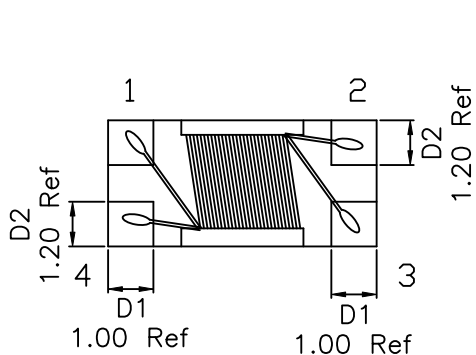
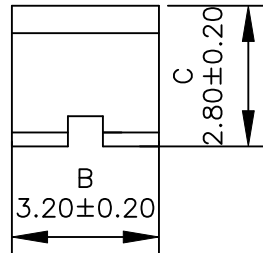
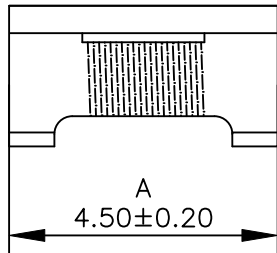
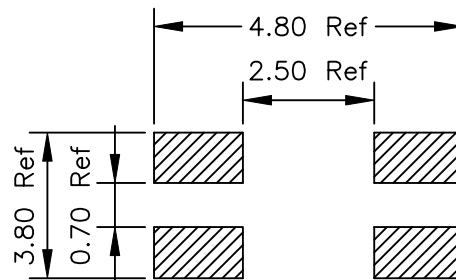


1. Mechanical Dimensions:

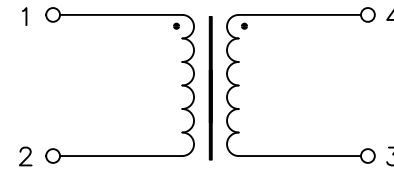


Bottom view



Pad layout

2. Schematic:



3. Electrical Specifications: @25C

- OCL: 11uH+50%/-30% @100KHz 0.25V Each Wdg
- Impedance: 5000±25% @100MHZ
- Q: tbd Min @100KHz 0.25V Each Wdg
- Rated Current: 450mA Max
- Rated Voltage: 50Vdc
- DCR: 0.60 Ohms Max Each Wdg
- Insulation Resistance: 10MOhms Min 1 Minute
- Withstand Voltage: 125Vdc
- Turn Ratio: (1-2):(4-3)=1:1±2%
- SRF: Pins 1-2 tbd Min

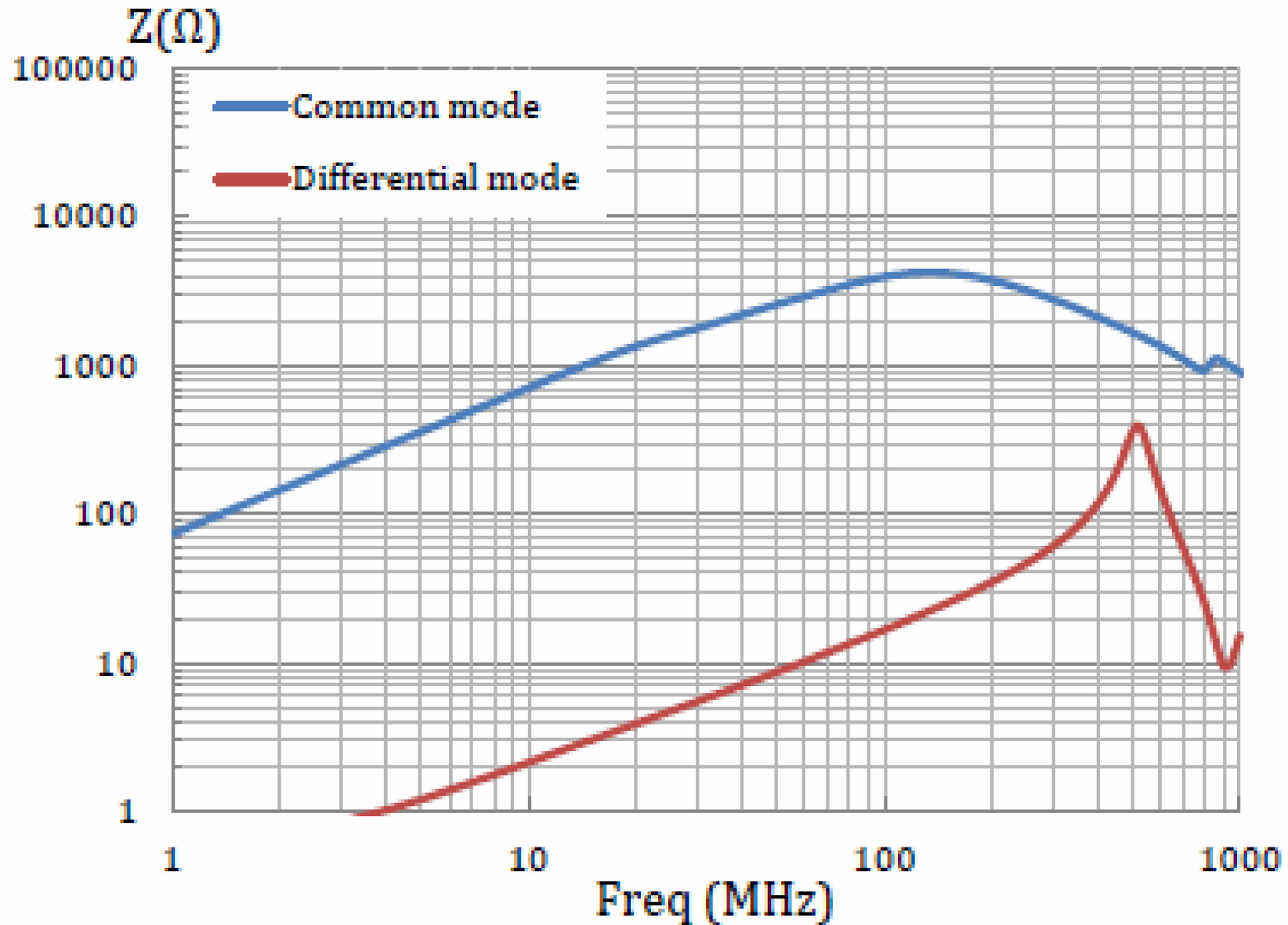
Notes:

1. Solderability: Leads shall meet MIL-STD-202G, Method 208H for solderability.
2. Flammability: UL94V-0
3. ASTM oxygen index: > 28%
4. Insulation System: Class F 155°C. UL file E151556
5. Operating Temperature: -40°C to +125°C
6. Storage Temperature Range: -40°C to +125°C
7. Aqueous wash compatible
8. SMD Lead Coplanarity: 0.004"(0.102mm) Max
9. Electrical and mechanical specifications 100% tested
10. RoHS Compliant Component
11. Recommended IR Reflow peak temp of 260°C Max.
12. Outsourced item processed & controlled under XFMRs QA system
13. Measurement ambient temperature of electrical: at 20°C
14. AEC-Q200 Certified Product

DOC. REV: A/1

PRELIMINARY

XFMRs Inc www.XFMRs.com		Title: Common Mode Choke	
UNLESS OTHERWISE SPECIFIED TOLERANCES: .xx ±0.25 Dimensions in MM		P/N: XFWACT453228-110	REV A
		DWN. Huo	Dec-15-22
SHEET 1 OF 2		CHK. YK Liao	Dec-15-22
		APP. TCH	Dec-15-22



DOC. REV: A/1

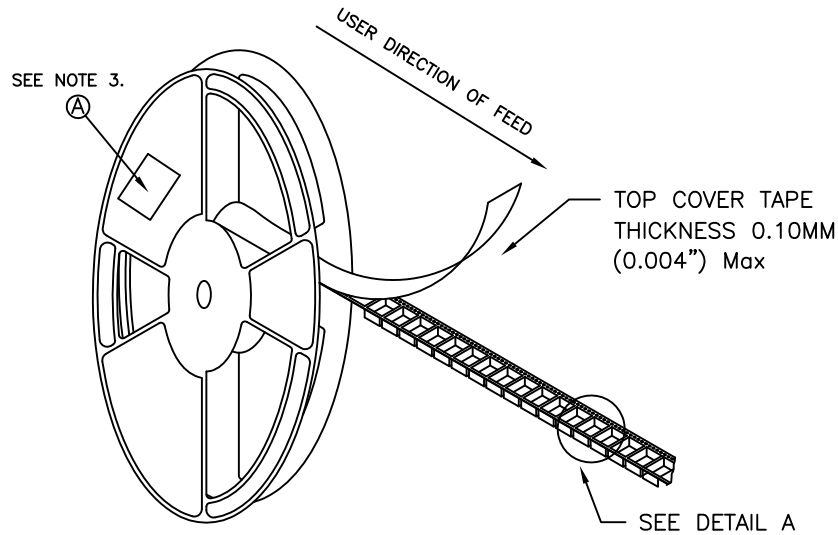
XFMRs Inc www.XFMRS.com	Title: Common Mode Choke		
	P/N: XFWACT453228-110		REV A
UNLESS OTHERWISE SPECIFIED TOLERANCES: .xx ±0.25 Dimensions in MM	DWN.	Huo	Dec-15-22
	CHK.	YK Liao	Dec-15-22
SHEET 2 OF 2	APP.	TCH	Dec-15-22

PROPRIETARY Document is the property of XFMRs Group & is not allowed to be duplicated without authorization.

TAPE AND REEL SPECIFICATION:

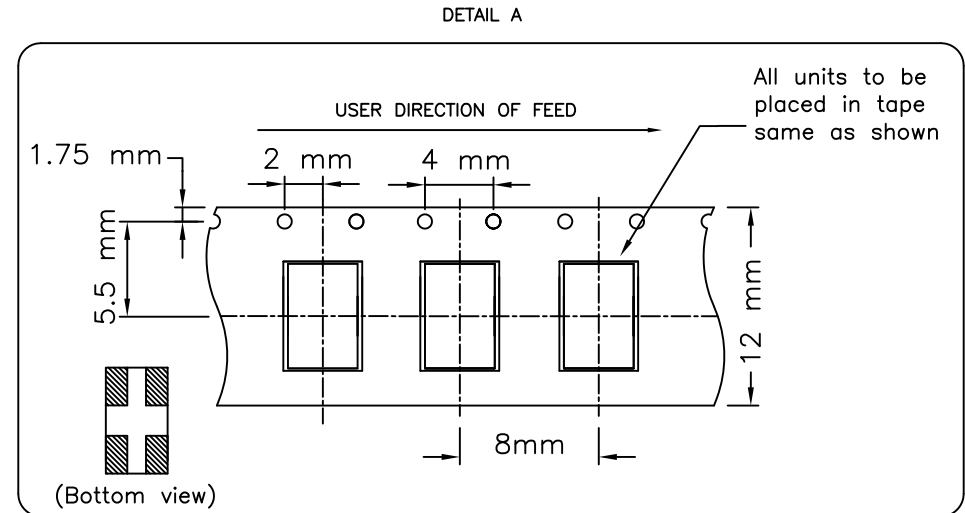
NOTES:

- 1) PROCESS IN ACCORDANCE WITH EIA-481-2 STANDARDS
 - * TAPE LEADER DIMENSION 15.30" MIN.
 - * TAPE TRAILER DIMENSION 6.30" MIN.
- 2) PARTS SHOULD BE PACKAGED IN ACCORDANCE WITH ESD GUIDELINES IN EIA-541.
- 3) REEL LABEL: 'A' * CUSTOMER PART NUMBER
 - * QUANTITY
 - * DATE CODE
- 4) 500PCS PER 7" REEL



REEL AND TAPE ORIENTATION

7" REEL DIAMETER



DOC.REV.A/1

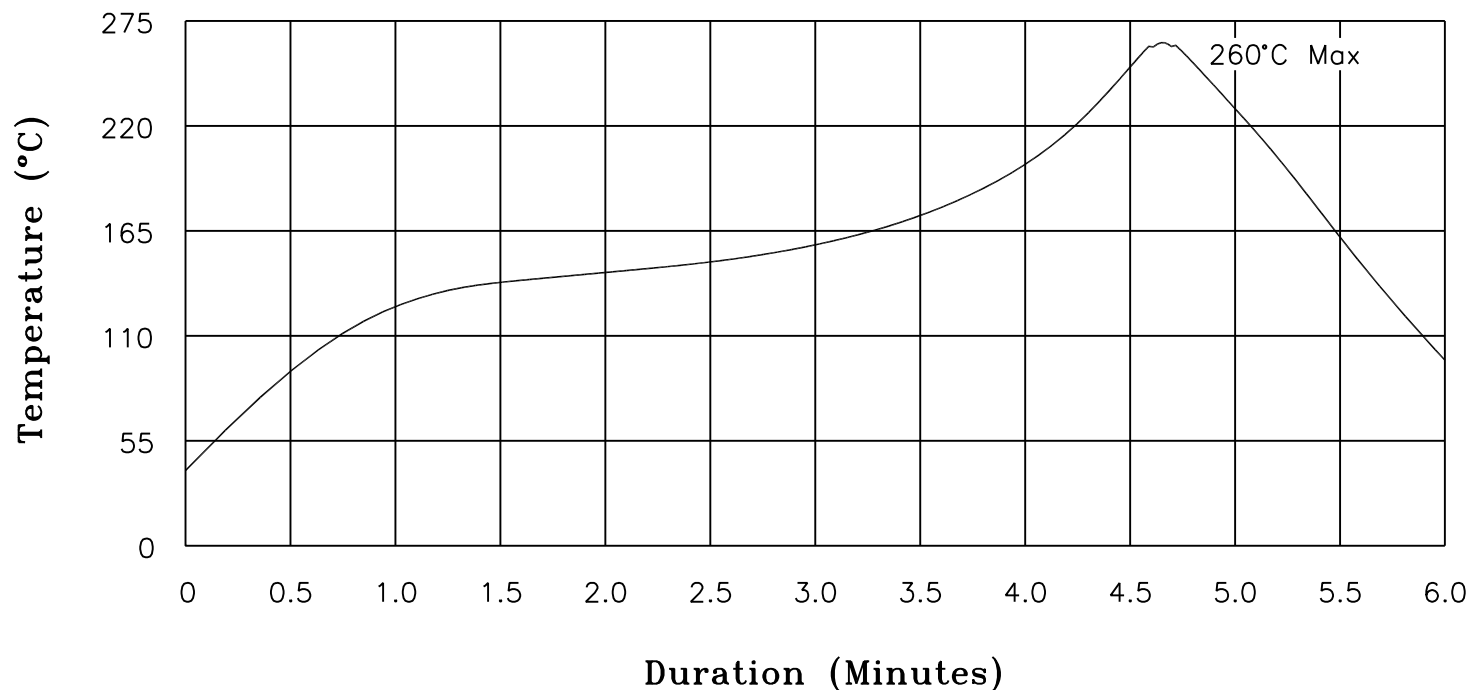
XFMR5 Inc	Title: T&R SPEC		
	UNLESS OTHERWISE SPECIFIED	P/N: XFWACT453228 Series	REV. A
TOLERANCES:	DWN.	Kong	Dec-14-17
.xxs ±xxxx	CHK.	YK Liao	Dec-14-17
Dimensions in mm	APP.	GL	Dec-14-17
SHT 1 OF 1			

PROPRIETARY

Document is the property of XFMR5 Group & is not allowed to be duplicated without authorization.

XFMRs

Recommended Infrared Reflow Temperature Profile for RoHS Compliant Parts



NOTES: Maximum duration at 260°+0/-5° with 10 seconds Max.
 Maximum duration above 217° shall be 60-150 seconds.
 ALL Temperatures refer to topside of the package, measured on the package body surface.

XFMRs Inc www.XFMRs.com	Title: IR REFLOW CHART (RoHS Compliant parts)			
	UNLESS OTHERWISE SPECIFIED TOLERANCES: N/A	P/N: N/A	REV. A	
	DWN.	Juan Mao	Jan-16-05	
	CHK.	YK Liao	Jan-16-05	
SHEET 1 OF 1	APP.	MS	Jan-16-05	

PROPRIETARY Document is the property of XFMRs Group & is not allowed to be duplicated without authorization.