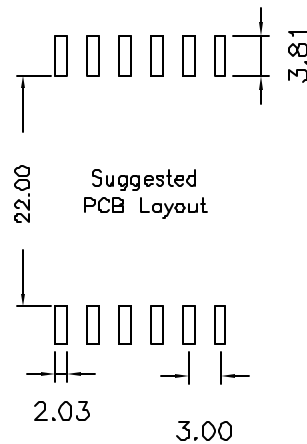
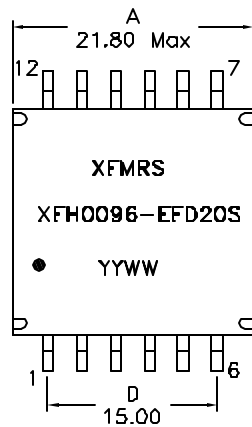
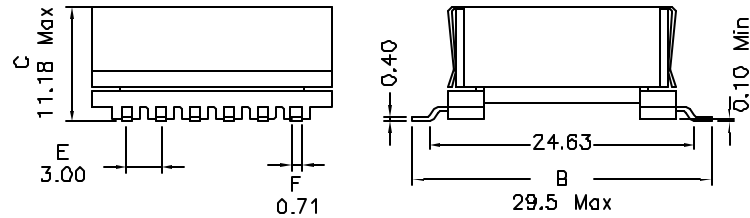
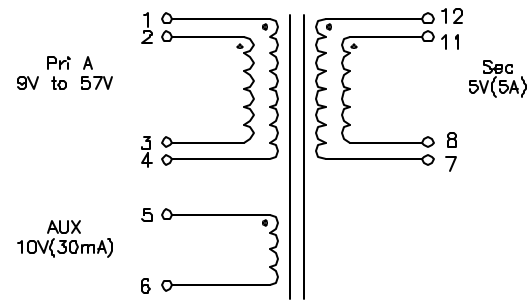


1. Mechanical Dimensions:



2. Schematic:



3. Electrical Specifications: @25C

OCL: Pins 1,2-3,4 9.0uH±10% @100KHz,1V

Q: Pins 1,2-3,4 50 Min @100KHz,1V

LL: Pins 1,2-3,4 0.30uH Max @100KHz 1V (short all other)

Cw/w: Pins 1-12 125pF Max @100KHz 1V (short Pri & Aux; Sec)

DCR: Pins 1-4 30 mOhms Max

Pins 2-3 33.5 mOhms Max

Pins 5-6 350 mOhms Max

Pins 12-7 8 mOhms Max

Pins 11-8 8 mOhms Max

Turns Ratio: (1-4):(2-3):(5-6):(12-7):(11-8)=1:1:0.75:0.375:0.375±2%

Isolation: 1500Vac Pri & Aux to Sec, 2 Sec

Isolation: 1500Vac Pri to Aux, 2 Sec

Isolation: 1500Vac wdgs to core, 2 Sec

Notes:

1. Solderability: Leads shall meet MIL-STD-202B, Method 208H for solderability.
2. Flammability: UL94V-0
3. ASTM oxygen index: > 28%
4. Insulation System: Class F 155°C, UL file E151558
5. Operating Temperature Range: All listed parameters are to be within tolerance from 0°C to +70°C
6. Storage Temperature Range: -40°C to +125°C
7. Aqueous wash compatible
8. SMD Lead Coplanarity: ±0.004"(0.102mm)
9. Electrical and mechanical specifications 100% tested
10. RoHS Compliant Component
11. Recommended IR Reflow peak temp of 260C Max.

DOC. REV A/1

PROPRIETARY Document is the property of XFMR5 Group & is not allowed to be duplicated without authorization.

XFMR5 Inc www.XFMR5.com	Title: TRANSFORMER		
	UNLESS OTHERWISE SPECIFIED TOLERANCES: .xx ±0.25 Dimensions in MM	P/N: XFH0096-EFD20S	REV. A
	DWN.	Mei Chen	Jul-05-10
	CHK.	YK Liao	Jul-05-10
SHEET 1 OF 1	APP.	Joe Huff	Jul-05-10