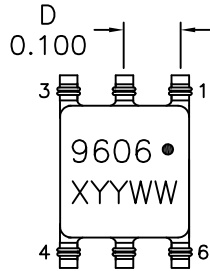
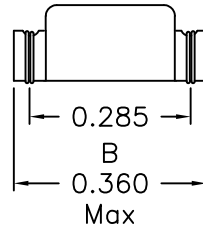
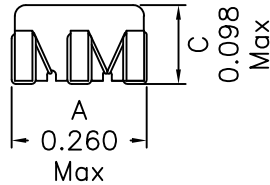
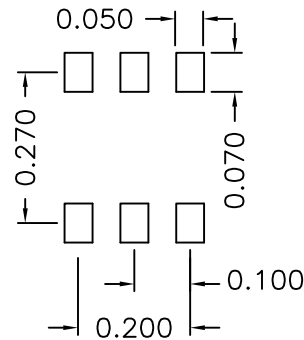


1. Mechanical Dimensions:

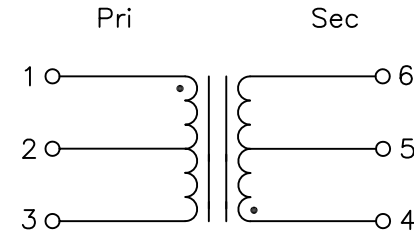


Top view



SUGGESTED PAD LAYOUT

2. Schematic:



3. Electrical Specifications: @25°C

PRI OCL: 960uH Min @10KHz, 0.1V

Q: 5 Min @10KHz, 50mV

LL: Pins 1-3 15uH Max @100KHz 0.1V (tie Pins 4-6)

Cw/w: 10pF Max @1KHz, 0.1V

PRI DCR: 0.60 Ohms Max

SEC DCR: 0.60 Ohms Max (each)

Turn Ratio: (1-3):(4-6)=1:1

Hipot: 1500Vdc, Pri to Sec

Notes:

1. Solderability: Leads shall meet MIL-STD-202G, Method 208H for solderability.
2. Flammability: UL94V-0
3. ASTM oxygen index: > 28%
4. Insulation System: Class F 155°C. UL file E151556
5. All listed parameters are to be within tolerance from -40°C to +85°C unless otherwise noted.
6. Storage Temperature Range: -55°C to +125°C
7. Aqueous wash compatible
8. SMD Lead Coplanarity: ±0.004"(0.102mm)
9. Electrical and mechanical specifications 100% tested
10. RoHS Compliant Component

PRELIMINARY

DOC. REV: A/-

XFMRs Inc www.XFMRs.com	Title: Gate Drive Transformer		
	UNLESS OTHERWISE SPECIFIED TOLERANCES: .xxx ±0.010 Dimensions in Inch	P/N: XF9606-GD11	REV. A
SHEET 1 OF 1	DWN.	Yuan	Mar-27-15
	CHK.	YK Liao	Mar-27-15
	APP.	BSJ	Mar-27-15

PROPRIETARY

Document is the property of XFMRs Group & is not allowed to be duplicated without authorization.