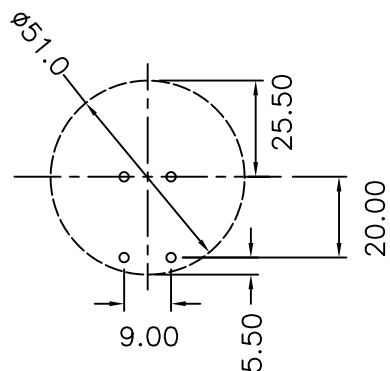
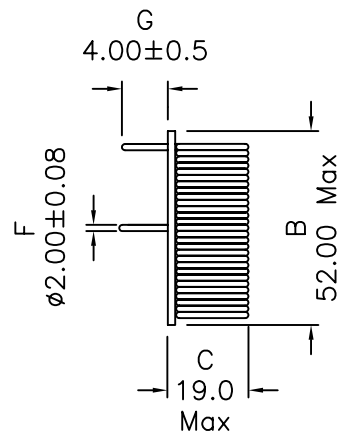
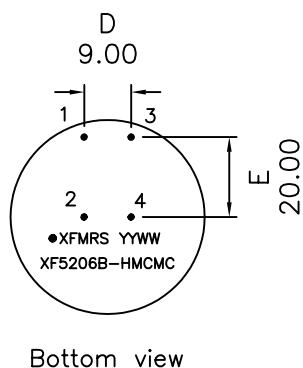
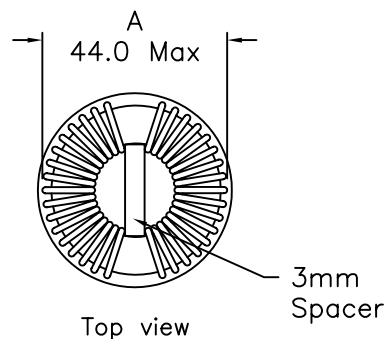
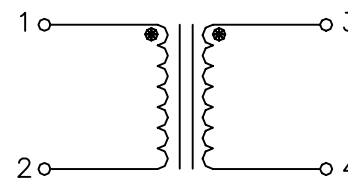


## 1. Mechanical Dimensions:



## 2. Schematic:



## 3. Electrical Specifications: @25°C

OCL: 520uH Min @10KHz 0.1V, Each Wdg

200uH Min @10KHz 0.1V, Each Wdg at -40°C to 0°C

520uH Min @10KHz 0.1V, Each Wdg at 0°C to 85°C

Q: 5 Min @10KHz 0.1V, Each Wdg

LL: 8uH Max @10KHz 0.1V Short Opp. Wdg.

DCR: 2.9 mOhms Max, Each Wdg

CURRENT RATING: 30A

Hi-pot: 1500Vac for 2 Sec Wdg to Wdg

### Notes:

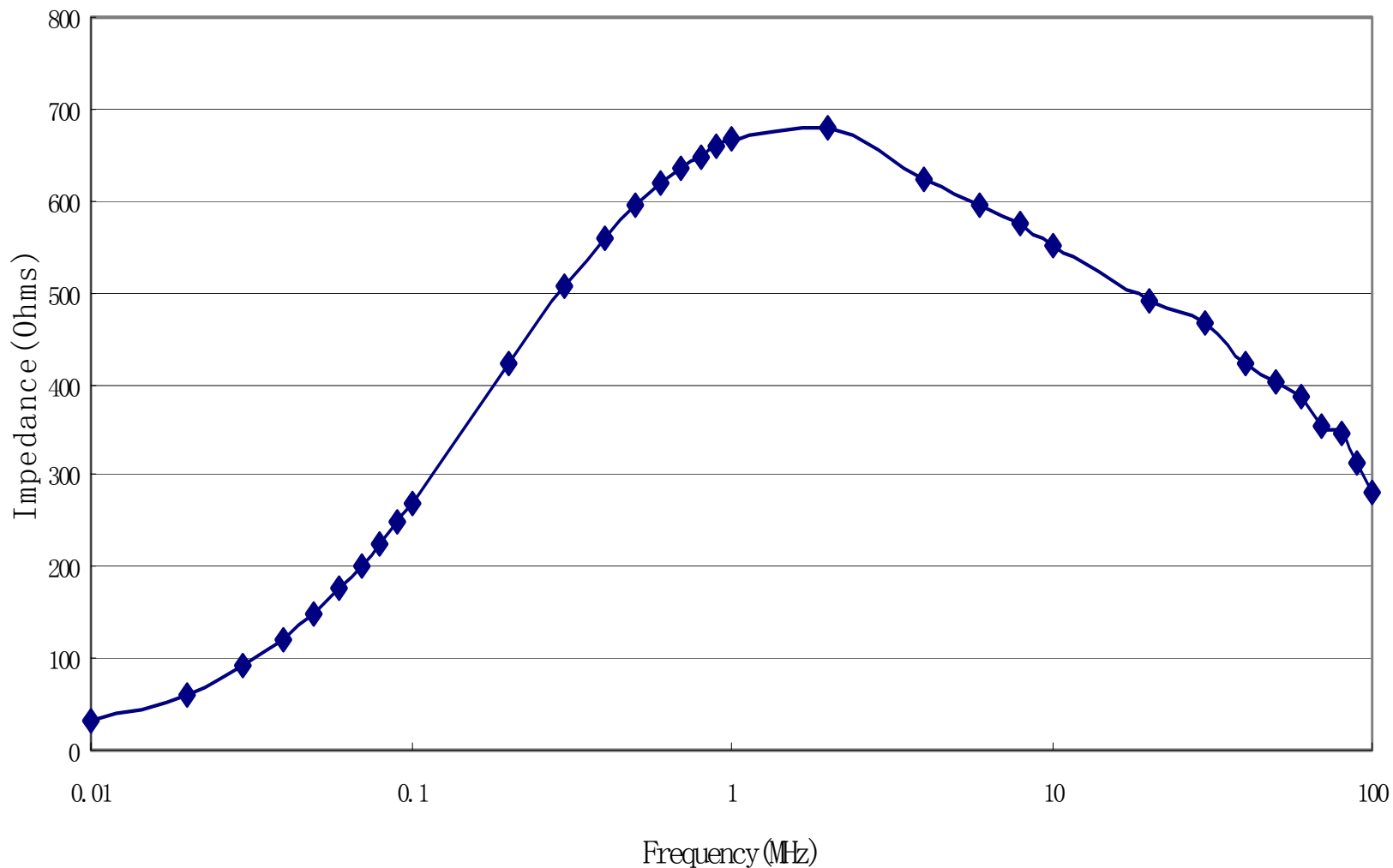
- Solderability: Leads shall meet MIL-STD-202G, Method 208H for solderability.
- Flammability: UL94V-0
- ASTM oxygen index: > 28%
- Insulation System: Class F 155°C. UL file E151556
- All listed parameters are to be within tolerance from -40°C to +85°C unless otherwise noted
- Storage Temperature Range: -55°C to +125°C
- Aqueous wash compatible
- Electrical and mechanical specifications 100% tested
- RoHS Compliant Component

DOC. REV: A/2

<b>XFMRs Inc.</b> www.XFMRs.com	Title: <b>COMMON MODE CHOKE</b>		
	UNLESS OTHERWISE SPECIFIED TOLERANCES: .xx ±0.25 Dimensions in MM	P/N: XF5206B-HMCMC	REV. A
SHEET 1 OF 2	DWN.	Feng	May-08-12
	CHK.	YK Liao	May-08-12
	APP.	BW	May-08-12

**PROPRIETARY**

Document is the property of XFMRs Group & is not allowed to be duplicated without authorization.



DOC. REV: A/2

<b>XFMRs Inc.</b> www.XFMRS.com	Title: <b>COMMON MODE CHOKE</b>		
	UNLESS OTHERWISE SPECIFIED TOLERANCES: .xx ±0.25 Dimensions in MM	P/N: XF5206B-HMCMC	REV. A
	DWN.	Feng	May-08-12
	CHK.	YK Liao	May-08-12
SHEET 2 OF 2	APP.	BW	May-08-12

**PROPRIETARY**

Document is the property of XFMRs Group & is not allowed to be duplicated without authorization.