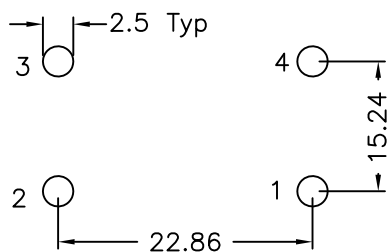
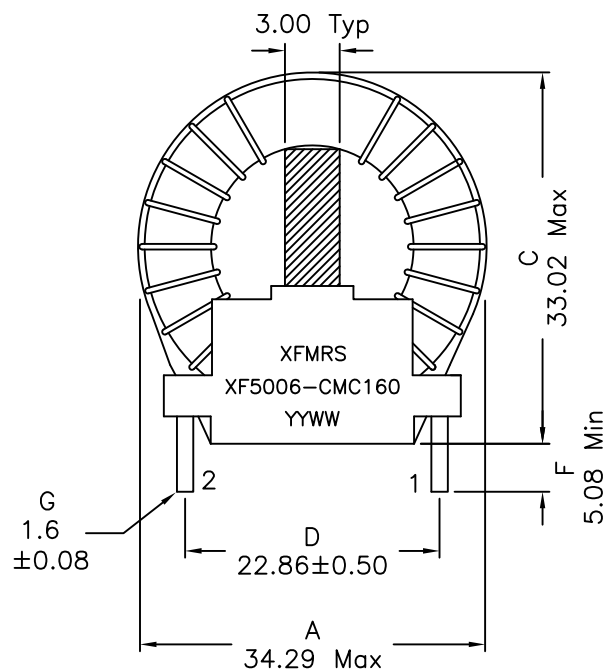
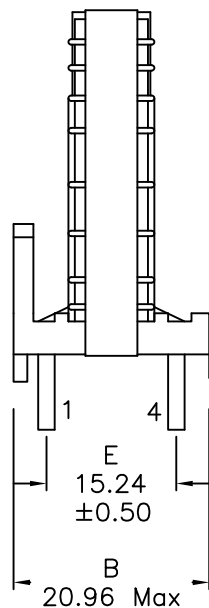
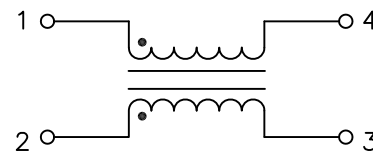


1. Mechanical Dimensions:



SUGGESTED FOOTPRINT

2. Schematic:



3. Electrical Specifications: @25°C

- OCL: 500uH Min @60Hz, 0.25V Each Wdg
200uH Min @60Hz, 0.25V -40°C to 0°C Each Wdg
- Q: 10 Min @60Hz, 0.25V Each Wdg
- LL: 2-3 5.0uH Typical, 60Hz 0.25V, Short 1-4
- Cw/w: 2-1 11.5pF Typical, 60Hz 0.25V
- DCR: 5mOhms Max Each Wdg
- Rated Current: 20Arms Max
- Hipot: 1250Vac Wdg to Wdg

Notes:

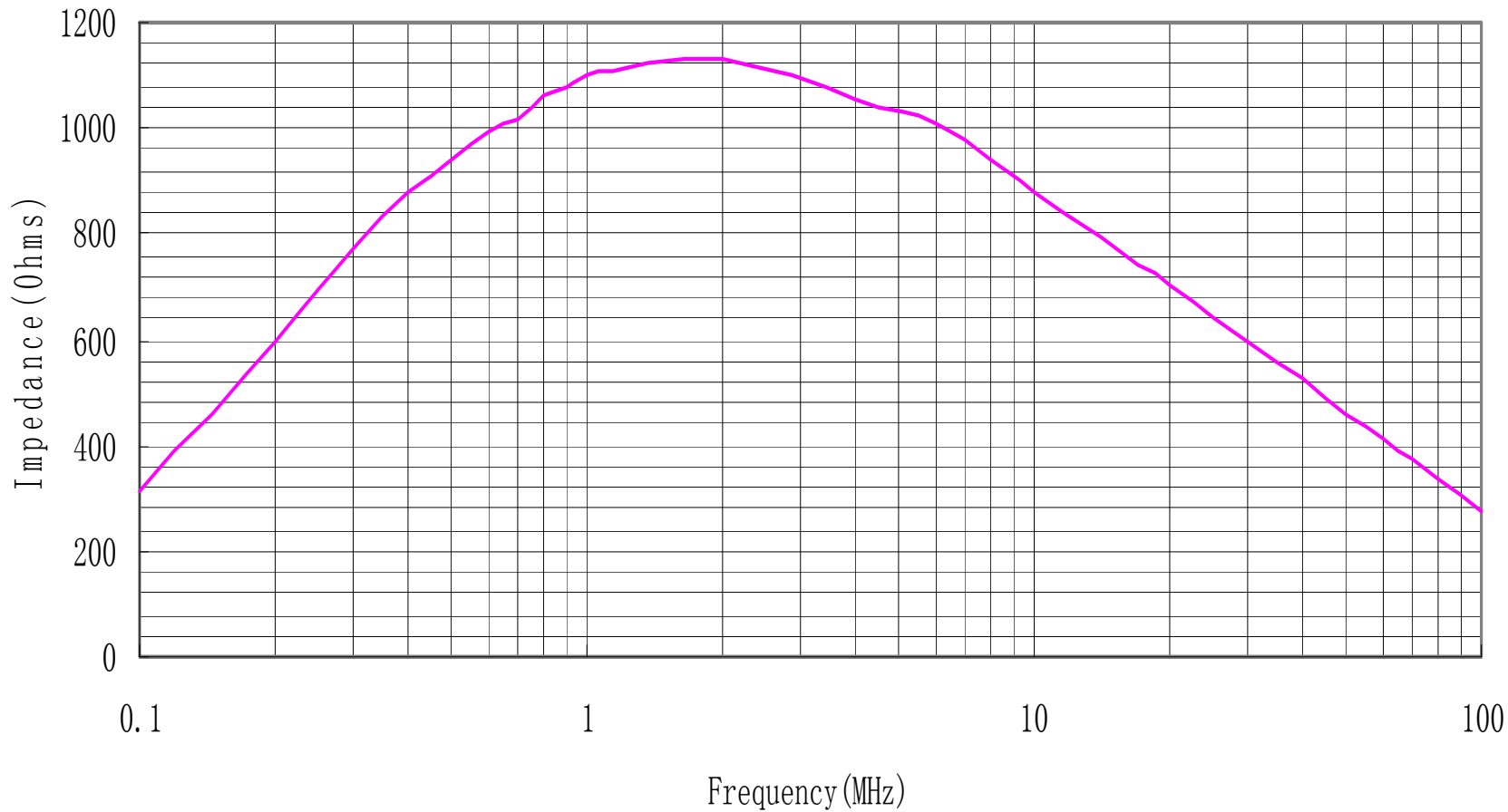
1. Solderability: Leads shall meet MIL-STD-202G, Method 208H for solderability.
2. Flammability: UL94V-0
3. ASTM oxygen index: > 28%
4. Insulation System: Class F 155°C. UL file E151556
5. All listed parameters are to be within tolerance from -40°C to +125°C unless otherwise noted.
6. Storage Temperature Range: -55°C to +125°C
7. Aqueous wash compatible
8. Electrical and mechanical specifications 100% tested
9. RoHS Compliant Component

DOC. REV: A/1

XFMR5 Inc www.XFMR5.com	Title: Common Mode Choke		
	UNLESS OTHERWISE SPECIFIED TOLERANCES: .xx ±0.20 Dimensions in mm	P/N: XF5006-CMC160	REV. A
SHEET 1 OF 2	DWN. CHK. APP.	Yuan YK Liao BSJ	Dec-02-13

PROPRIETARY

Document is the property of XFMR5 Group & is not allowed to be duplicated without authorization.



DOC. REV: A/1

XFMRs Inc www.XFMRs.com	Title: Common Mode Choke		
	UNLESS OTHERWISE SPECIFIED TOLERANCES: .xx ±0.20 Dimensions in mm	P/N: XF5006-CMC160	REV. A
SHEET 2 OF 2	DWN.	Yuan	Dec-02-13
	CHK.	YK Liao	Dec-02-13
	APP.	BSJ	Dec-02-13