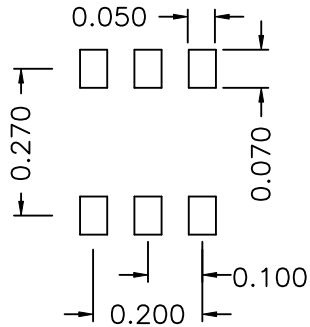
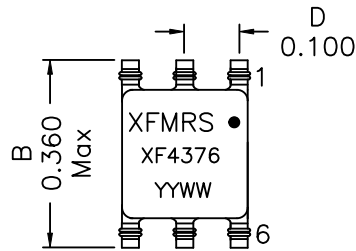
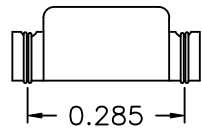
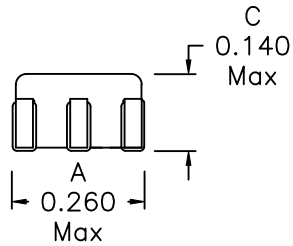
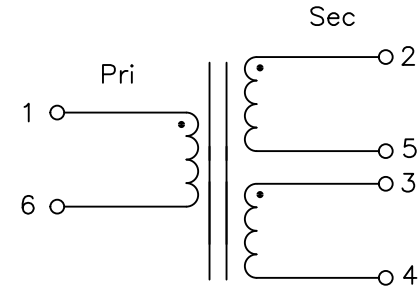


1. Mechanical Dimensions:



SUGGESTED PAD LAYOUT

2. Schematic:



3. Electrical Specifications: @25°C

OCL: Pins 1-6 437uH Min @10KHz 0.1V

Q: Pins 1-6 8 Min @10KHz 50mV

Leakage Inductance: 1-6, 0.850uH Max

@100KHz 0.1V (Tie 2-5)

DCR: Pins 1-6 0.850 Ohms Max

DCR: Pins 3-4 0.850 Ohms Max

DCR: Pins 2-5 0.850 Ohms Max

Turn Ratio: Pins(1-6):(2-5):(3-4) = 1.00:1.00:1.00

Volts-Seconds: 16V*uSec Max

Isolation Voltage: 1500Vac, Wdg to Wdg

Notes:

1. Solderability: Leads shall meet MIL-STD-202G, Method 208H for solderability.
2. Flammability: UL94V-0
3. ASTM oxygen index: > 28%
4. Insulation System: Class F 155°C. UL file E151556
5. Operating Temperature Range: All listed parameters are to be within tolerance from -40°C to +85°C
6. Storage Temperature Range: -55°C to +125°C
7. Aqueous wash compatible
8. SMD Lead Coplanarity: ±0.004"(0.102mm)
9. Electrical and mechanical specifications 100% tested
10. RoHS Compliant Component

DOC REV A/2

XFMRS® www.XFMRS.com	Title: Gate Drive Transformer		
	UNLESS OTHERWISE SPECIFIED TOLERANCES: .xxx ±0.010 Dimensions in INCH	P/N: XF4376-GD11	REV. A
SHEET 1 OF 1	DWN.	Feng	Feb-02-21
	APP.	YK Liao	Feb-02-21
		TCH	Feb-02-21