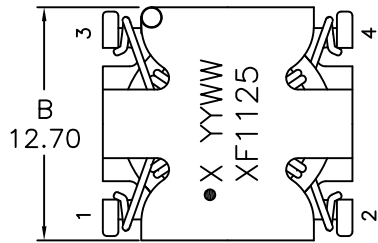
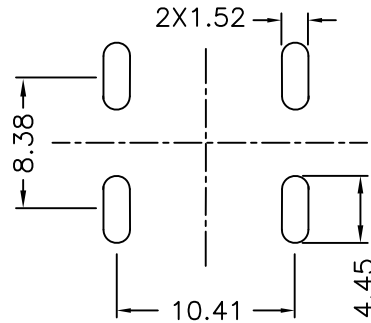


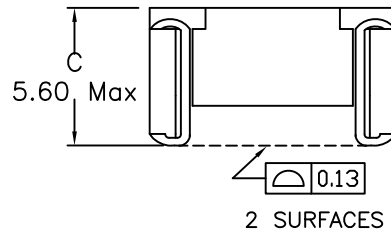
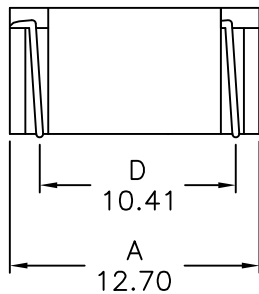
1. Mechanical Dimensions:



Top view



Suggested pad layout

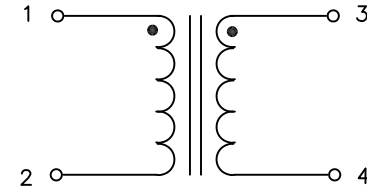


Notes:

1. Solderability: Leads shall meet MIL-STD-202G, Method 208H for solderability.
2. Flammability: UL94V-0
3. ASTM oxygen index: > 28%
4. Insulation System: Class F 155°C. UL file E151556
5. Operating Temperature Range: All listed parameters are to be within tolerance from -40°C to +130°C
6. Storage Temperature Range: -55°C to +125°C
7. Aqueous wash compatible
8. SMD Lead Coplanarity: ±0.004"(0.102mm)
9. Electrical and mechanical specifications 100% tested
10. RoHS Compliant Component
11. Recommended IR Reflow peak temp of 250°C Max.

DOC. REV: A/4

2. Schematic:



3. Electrical Specification: @25°C

OCL: 1125uH+30/-35% @10KHz, 0.1V Each wdg

Q: Pins 1-2 8 Min @10KHz, 0.1V

LL: Pins 1-2 3uH Min @100KHz, 0.1V Short P3+4

DCR: 55 mOhms Max, Each wdg

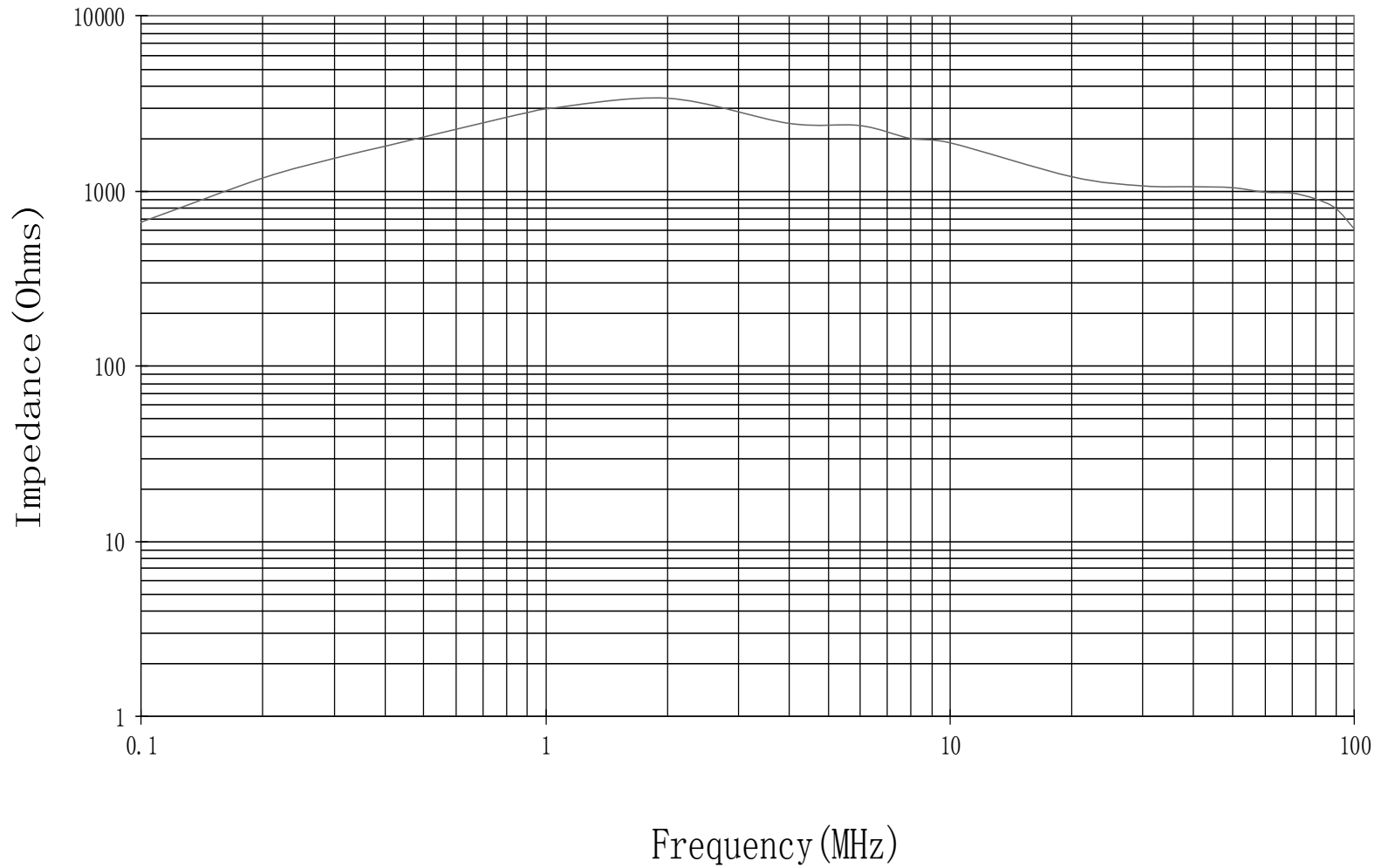
Rated Current (For 40°C Rise): 1.8 A

Turns Ratio: (1-2):(3-4) = 1.000:1.000±2%

Hipot: 1500Vrms, Wdgs to Wdgs

SRF: Pins 1-2 800KHz Min

XFMRs Inc. www.XFMRS.com	Title: Common Mode Choke		
	UNLESS OTHERWISE SPECIFIED TOLERANCES: .xx ±0.25 Dimensions in MM	P/N: XF1125-CMC6	REV. A
SHEET 1 OF 2	DWN.	Xiang	Dec-22-16
	CHK.	YK Liao	Dec-22-16
	APP.	BSJ	Dec-22-16



DOC. REV: A/4

XFMRs Inc. www.XFMRs.com	Title: Common Mode Choke		
	P/N: XF1125-CMC6		REV. A
UNLESS OTHERWISE SPECIFIED TOLERANCES: .xx ±0.25 Dimensions in MM	DWN.	Xiang	Dec-22-16
	CHK.	YK Liao	Dec-22-16
SHEET 2 OF 2	APP.	BSJ	Dec-22-16

PROPRIETARY

Document is the property of XFMRs Group & is not allowed to be duplicated without authorization.