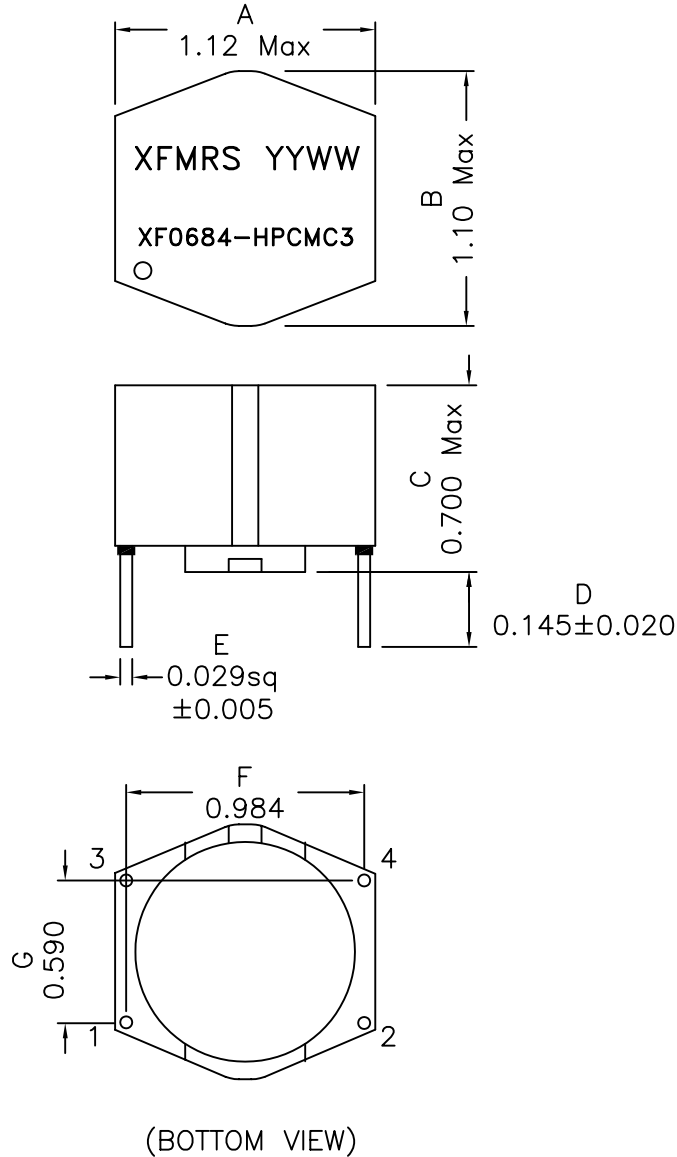
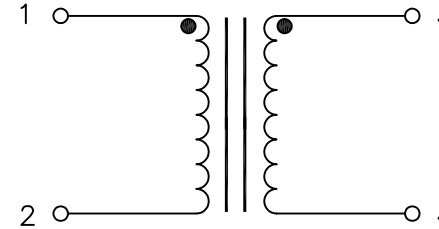


1. Mechanical Dimensions:



2. Schematic:



3. Electrical Specifications:@25°C

OCL: 6.8mH±30% @10KHz 0.05V Each Wdg.

DCR: 147mOhms Max, Each Wdg.

Rated Current: 2A

Isolation Voltage: 1500Vac, Wdg. to Wdg., 2 Sec

Rated Voltage: 250Vac

Notes:

1. Solderability: Leads shall meet MIL-STD-202G, Method 208H for solderability.
2. Flammability: UL94V-0
3. ASTM oxygen index: > 28%
4. Insulation System: Class F 155°C. UL file E151556
5. Operating Temperature Range: All listed parameters are to be within tolerance from -40°C to +85°C
6. Storage Temperature Range: -55°C to +125°C
7. Aqueous wash compatible
8. Electrical and mechanical specifications 100% tested
9. RoHS Compliant Component

DOC. REV A/1

XFMRS Inc. www.XFMRS.com		Title: Common Mode Choke	
UNLESS OTHERWISE SPECIFIED TOLERANCES: .xxx ±0.020 Dimensions in INCH		P/N: XF0684-HPCMC3	REV. A
		DWN.	李小锋 May-04-09
		CHK.	廖玉坤 May-04-09
SHEET 1 OF 1		APP.	BW May-04-09

PROPRIETARY

Document is the property of XFMRS Group & is not allowed to be duplicated without authorization.