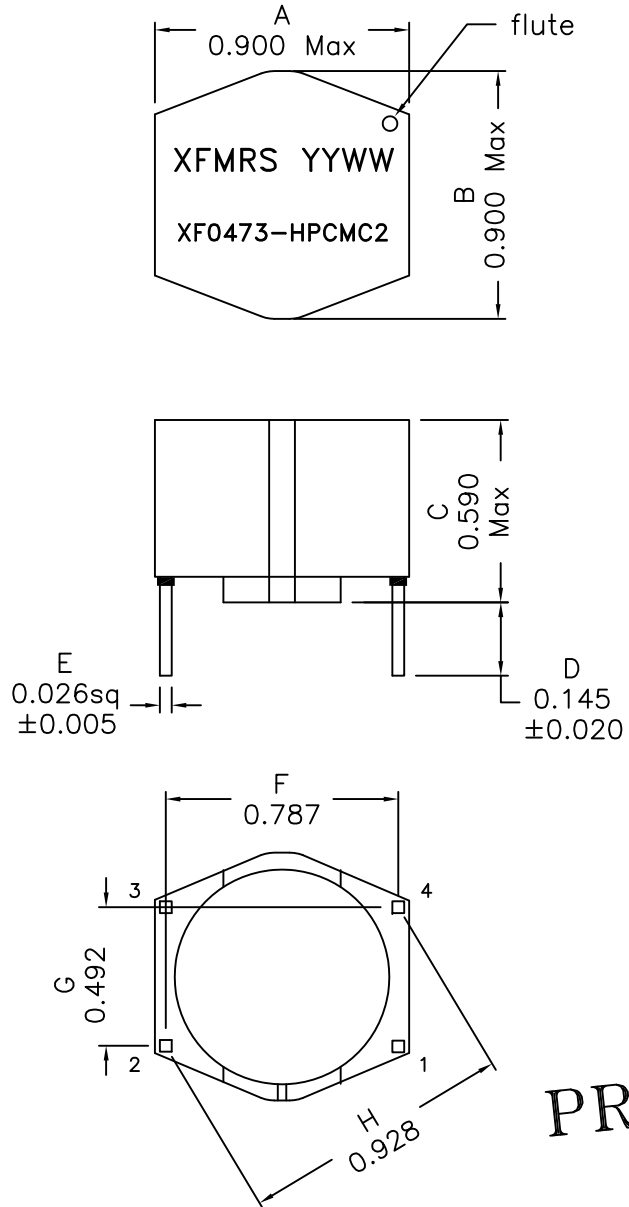
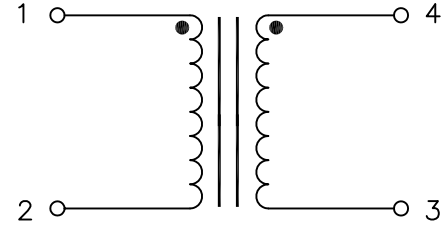


1. Mechanical Dimensions:



(BOTTOM VIEW)

2. Schematic:



3. Electrical Specifications: @25°C

OCL: 47mH±30% @10KHz 0.1mA, Each Wdg

Q: Pins 1-2 tbd Min @10KHz 0.1mAV

DCR: 2500 mOhms Typ (Each Wdg)

LL: Pins 1-2 700uH Typ @10KHz, 5mA (Short Pin 4-3)

Rated Current: 0.3A

Hipot: 1500Vac, Wdg to Wdg, 2 Sec

SRF: Pins 1-2 tbd Min

Notes:

1. Solderability: Leads shall meet MIL-STD-202G, Method 208H for solderability.
2. Flammability: UL94V-0
3. ASTM oxygen index: > 28%
4. Insulation System: Class F 155°C. UL file E151556
5. All listed parameters are to be within tolerance from -40°C to +85°C unless otherwise noted
6. Storage Temperature Range: -25°C to +40°C
7. Aqueous wash compatible
8. Electrical and mechanical specifications 100% tested
9. RoHS Compliant Component

PRELIMINARY

DOC. REV: A/-

XFMRS Inc. www.XFMRS.com		Title: Common Mode Choke	
UNLESS OTHERWISE SPECIFIED TOLERANCES: .xxx ±0.020 Dimensions in INCH	P/N: XF0473-HPCMC2	REV. A	
	DWN.	Xiang	Apr-19-16
	CHK.	YK Liao	Apr-19-16
SHEET 1 OF 2	APP.	GL	Apr-19-16

PROPRIETARY

Document is the property of XFMRS Group & is not allowed to be duplicated without authorization.