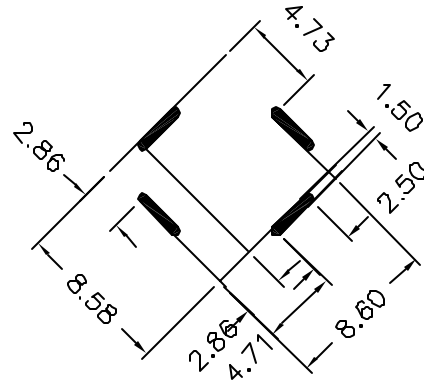
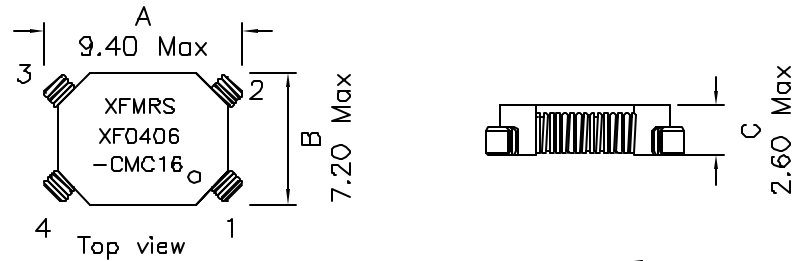
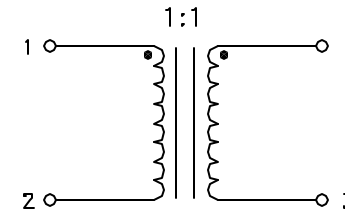


1. Mechanical Dimensions:



RECOMMENDED PCB LAYOUT

2. Schematic:



3. Electrical Specifications:

OCL: 40uH Typ @100KHz 0.1V Each Wdg (0°C to +85°C)
 19uH Min @100KHz 0.1V Each Wdg (-40°C to 0°C)

Q: 10 Min @100KHz 0.1V Each Wdg

LL: 0.36uH Typ @100KHz 0.1V

DCR: 0.025 Ohms Max Each Wdg

Cw/w: Pins 1-4 2.5pF Typ @100KHz 0.1V

Irms Amperes: 3.10Arms Max (apx 40°C temp rise)

Turns Ratio: (1-2):(4-3)=1:1

Hipot: 300Vdc for 1Sec Winding to Winding

Notes:

1. Solderability: Leads shall meet MIL-STD-202G, Method 208H for solderability.
2. Flammability: UL94V-0
3. ASTM oxygen index: > 28%
4. Insulation System: Class F 155°C. UL file E151556
5. All listed parameters are to be within tolerance from -40°C to +85°C unless otherwise noted.
6. Storage Temperature Range: -55°C to +125°C
7. Aqueous wash compatible
8. SMD Lead Coplanarity: $\pm 0.004^\circ$ (0.102mm)
9. Electrical and mechanical specifications 100% tested
10. RoHS Compliant Component

DOC. REV. A/2

PROPRIETARY Document is the property of XFMR5 Group & is not allowed to be duplicated without authorization.

XFMR5 Inc www.XFMR5.com	Title: smd CMC		
UNLESS OTHERWISE SPECIFIED TOLERANCES: .xx ± 0.25 Dimensions in MM	P/N: XF0406-CMC16	REV. A	
	DWN.	Xianyi	Jul-08-09
	CHK.	YK liao	Jul-08-09
SHEET 1 OF 1	APP.	Joe Huff	Jul-08-09