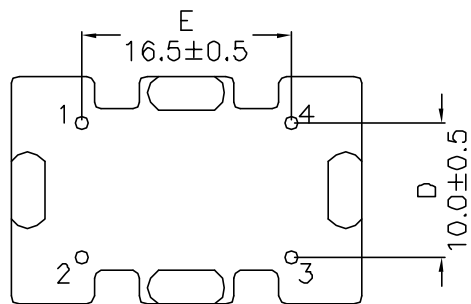
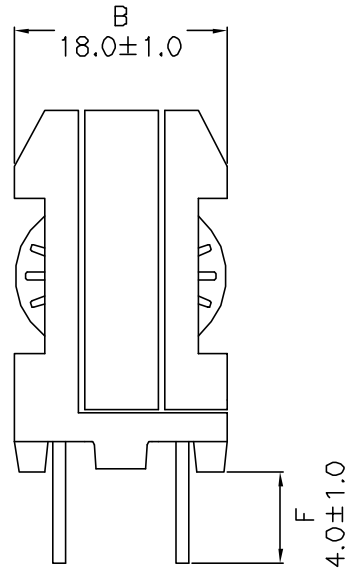
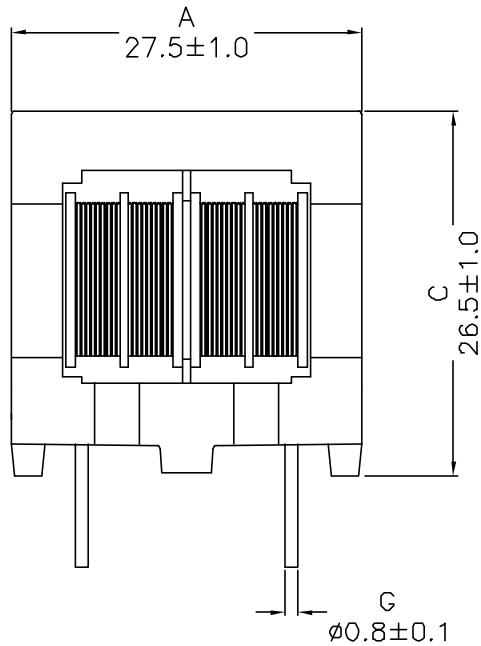
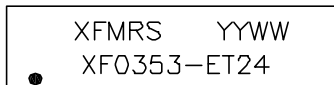


1. Mechanical Dimensions:

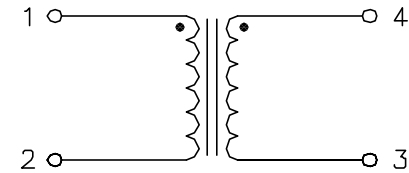


(BOTTOM VIEW)

Marking: (on TOP)



2. Schematic:



3. Electrical Specifications:

OCL: 35.0mH Min @10KHz 0.1V, Each Wdg
 DCR: tbd Ohms Max, Each Wdg
 Rated Current: 0.6Arms Max
 HIPOT: 2000Vac 1 min, Wdg to Wdg
 Rated Voltage: 250Vrms

Notes:

- Solderability: Leads shall meet MIL-STD-202, Method 208D for solderability.
- Flammability: UL94V-0
- ASTM oxygen index: > 28%
- Insulation System: Class F 155°C. UL file E151556
- Operating Temperature Range: All listed parameters are to be within tolerance from -20°C to +115°C
- Storage Temperature Range: -55°C to +125°C
- Aqueous wash compatible
- SMD Lead Coplanarity: $\pm 0.004^{\circ}$ (0.102mm)
- Moisture Sensitivity: Level 3
- Electrical and mechanical specifications 100% tested
- RoHS Compliant Component

DOC REV: A/1

PROPRIETARY Document is the property of XFMRS Group & is not allowed to be duplicated without authorization.

XFMRS Inc	Title: COMMON MODE CHOKE		
	UNLESS OTHERWISE SPECIFIED		P/N: XF0353-ET24
TOLERANCES:	.xx ± 0.25	REV. A	
Dimensions in mm	CHK.	刘 鹏	Apr-01-05
Scale 2:1 SHT 1 OF 1	APP.	李小锋	Apr-01-05