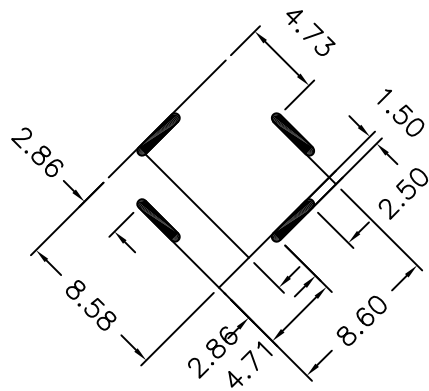
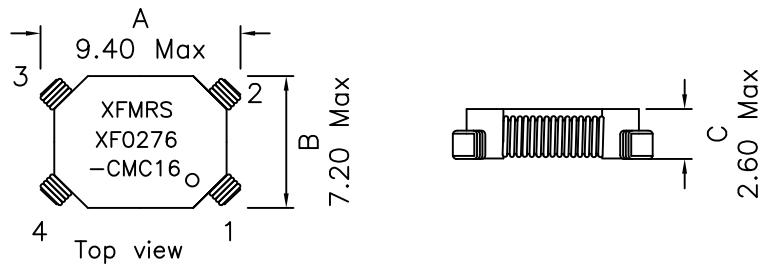
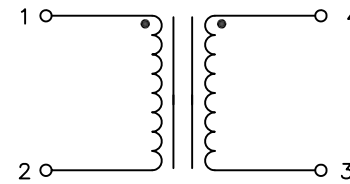


1. Mechanical Dimensions:



RECOMMENDED PCB ALYOUT

2. Schematic:



3. Electrical Specifications:

OCL: 27uH Min @100KHz 0.1V Each Wdg

Q: Pins 1-2 tbd Min @100KHz 0.1V

LL: Pins 1-2 tbd uH Typ @100KHz 0.1V, short Pins 3+4

DCR: 0.0065 Ohms Typ Each Wdg

Cw/w: Pins 1-4 tbd pF Typ @100KHz 0.1V

Irms Amperes: 7.00A Max

Turns Ratio: Pins (1-2):(4-3)=1:1

HIPOT: 300Vdc for 1Sec Winding to Winding

Notes:

1. Solderability: Leads shall meet MIL-STD-202G, Method 208H for solderability.
2. Flammability: UL94V-0
3. ASTM oxygen index: > 28%
4. Insulation System: Class F 155°C. UL file E151556
5. Operating Temperature Range: All listed parameters are to be within tolerance from -40°C to +160°C
6. Storage Temperature Range: -40°C to +160°C
7. Aqueous wash compatible
8. SMD Lead Coplanarity: $\pm 0.004''$ (0.102mm)
9. Electrical and mechanical specifications 100% tested
10. RoHS Compliant Component
11. 260C reflow compatible

DOC. REV. A/-

PRELIMINARY

XFMRS Inc www.XFMRS.com	Title: TRANSFORMER		
	UNLESS OTHERWISE SPECIFIED TOLERANCES: .xx ± 0.25 Dimensions in MM	P/N: XF0276-CMC16	REV. A
SHEET 1 OF 1	DWN.	Mei Chen	Oct-6-16
	CHK.	YK Liao	Oct-6-16
	APP.	GL	Oct-6-16

PROPRIETARY

Document is the property of XFMRS Group & is not allowed to be duplicated without authorization.