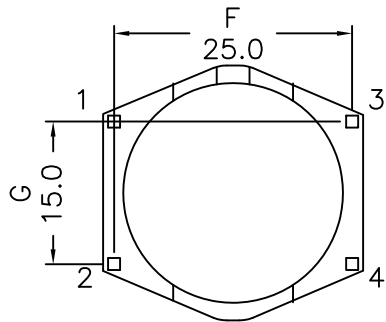
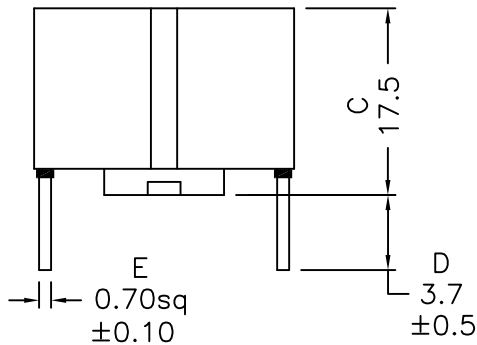
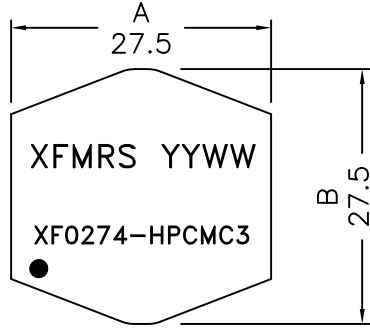
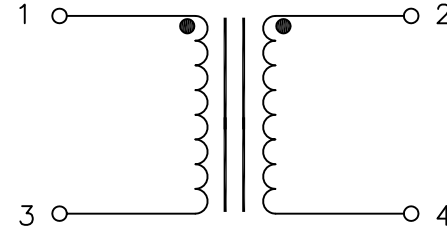


1. Mechanical Dimensions:



(BOTTOM VIEW)

2. Schematic:



3. Electrical Specifications:@25°C

OCL: 2.7mH±30% @10KHz 0.1V Each Wdg.

Q: tbd @10KHz 0.1V Each Wdg

DCR: 0.060 Ohms typ, Each Wdg.

LL: 30uH typ

Rated Voltage: 250Vac

Rated Current: 4Arms

Hipot: 1500Vac, Wdgs to Wdgs, 2 Sec

Notes:

1. Solderability: Leads shall meet MIL-STD-202G, Method 208H for solderability.
2. Flammability: UL94V-0
3. ASTM oxygen index: > 28%
4. Insulation System: Class F 155°C. UL file E151556
5. Operating Temperature Range: All listed parameters are to be within tolerance from -40°C to +125°C
6. Storage Temperature Range: -40°C to +125°C
7. Aqueous wash compatible
8. Electrical and mechanical specifications 100% tested
9. RoHS Compliant Component

PRELIMINARY

DOC. REV A/-

XFMRS Inc. www.XFMRS.com		Title: Common Mode Choke	
UNLESS OTHERWISE SPECIFIED TOLERANCES: .xx ±0.30		P/N:XF0274-HPCMC3	REV. A
Dimensions in mm		DWN.	Xianyi
SHEET 1 OF 1		CHK.	YK Liao
		APP.	DDC
			Oct-23-14
			Oct-23-14
			Oct-23-14

PROPRIETARY

Document is the property of XFMRS Group & is not allowed to be duplicated without authorization.