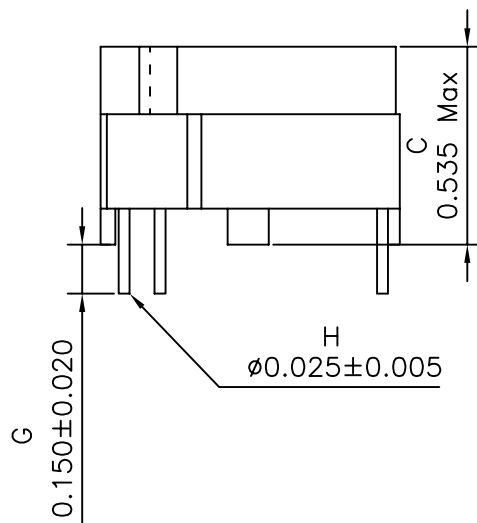
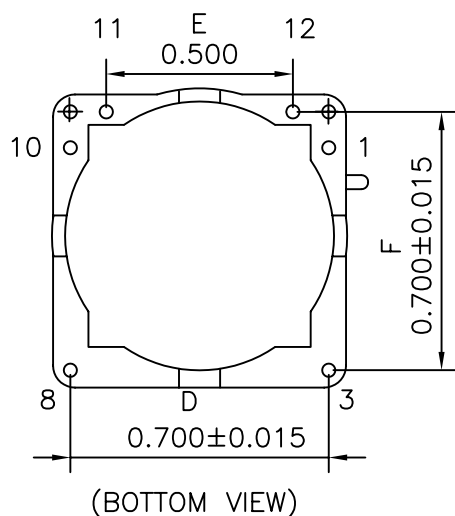
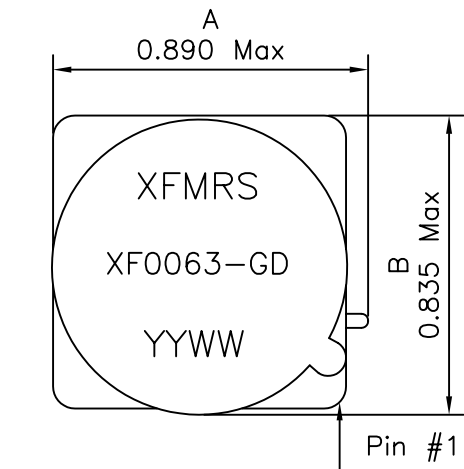
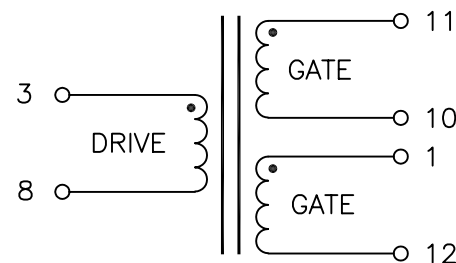


### 1. Mechanical Dimensions:



\*Remove unused pins

### 2. Schematic:



### 3. Electrical Specifications: @25°C

- OCL: 6.0mH-30/+50% @10KHz 0.1V, Each Wdg
- LL: Pins 3-8 0.80uH Max @100KHz 0.1V, Short Gates
- Cww: Pins 3-11 75pF Max @100KHz 0.1V
- DCR: Pins 3-8 0.318 Ohms Max
- Pins 1-12, 11-10 0.460 Ohms Max
- Turns Ratio: (3-8):(11-10):(1-12)=1:1:1±5%
- HIPOT: 3000Vac, Drive to Gate
- HIPOT: 2000Vac, Gate to Gate
- Q: Pins 3-8 7.5 Min @10KHz, 0.1V
- ET Constant: 118VuS at 2000 Gauss

Notes:

1. Solderability: Leads shall meet MIL-STD-202G, Method 208H for solderability.
2. Flammability: UL94V-0
3. ASTM oxygen index: > 28%
4. Insulation System: Class F 155°C. UL file E151556
5. Operating Temperature Range: All listed parameters are to be within tolerance from -40°C to +85°C
6. Storage Temperature Range: -55°C to +125°C
7. Aqueous wash compatible
8. Electrical and mechanical specifications 100% tested
9. RoHS Compliant Component

DOC REV: A/12

<b>XFMRS Inc.</b> www.XFMRS.com	Title: GATE DRIVE		
	UNLESS OTHERWISE SPECIFIED TOLERANCES: .xxx±0.010		P/N: XF0063-GD
Dimensions in Inch	DWN.	Feng	Dec-17-10
SHEET 1 OF 1	CHK.	YK Liao	Dec-17-10
	APP.	BW	Dec-17-10