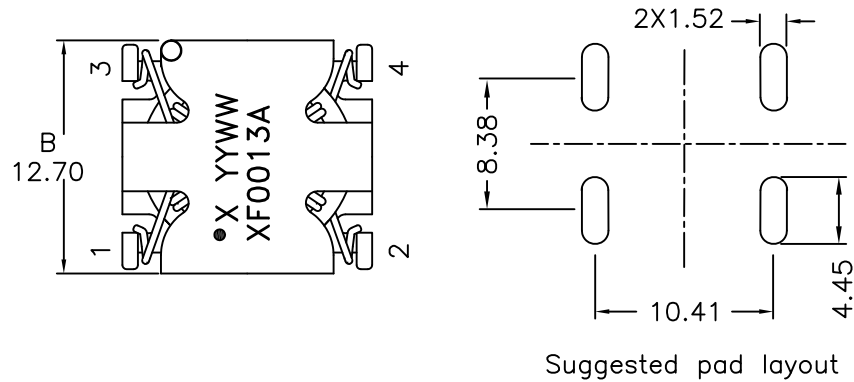
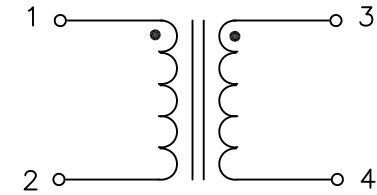


## 1. Mechanical Dimensions:



## 2. Schematic:



## 3. Electrical Specifications:

OCL: 1.170mH  $\pm 25\%$  @1KHz 1.0V

Q: 4 Min @100KHz 1.0V

DCR: 0.200 Ohms Max

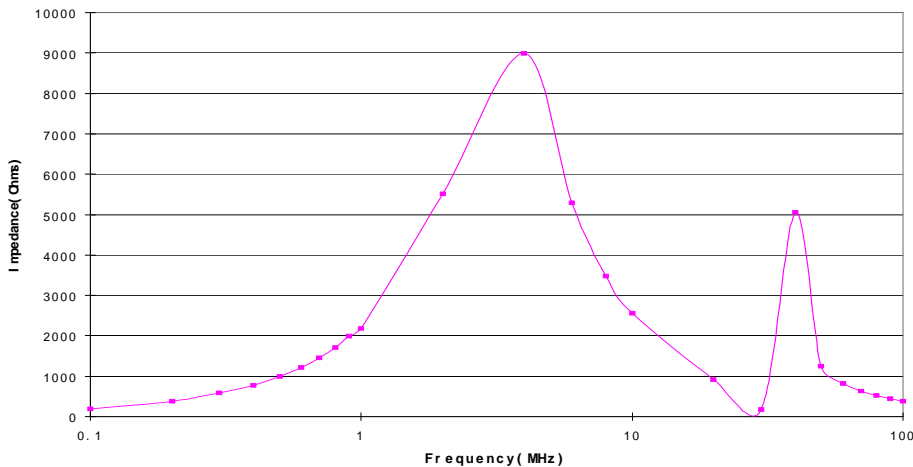
Rated Current: 1.22A (Based on 55°C Temp Rise)

TURNS RATIO: Pins (1-2):(3-4)=1:1 $\pm 5\%$

HIPOT: 500Vac

### Notes:

- Solderability: Leads shall meet MIL-STD-202G, Method 208H for solderability.
- Flammability: UL94V-0
- ASTM oxygen index: > 28%
- Insulation System: Class F 155°C. UL file E151556
- Operating Temperature Range: All listed parameters are to be within tolerance from -40°C to +85°C
- Storage Temperature Range: -55°C to +125°C
- Aqueous wash compatible
- SMD Lead Coplanarity:  $\pm 0.004"$  (0.102mm)
- Electrical and mechanical specifications 100% tested
- RoHS Compliant Component



DOC REV: A/8

<b>XFMRs Inc.</b> www.XFMRs.com	Title: Common Mode Choke	
	P/N: XF0013A-CMC6	REV. A
UNLESS OTHERWISE SPECIFIED TOLERANCES: .xx $\pm 0.25$ Dimensions in mm	DWN.	Mei Chen
	CHK.	YK Liao
SHEET 1 OF 1	APP.	Joe Huff