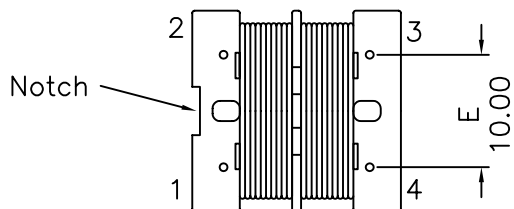
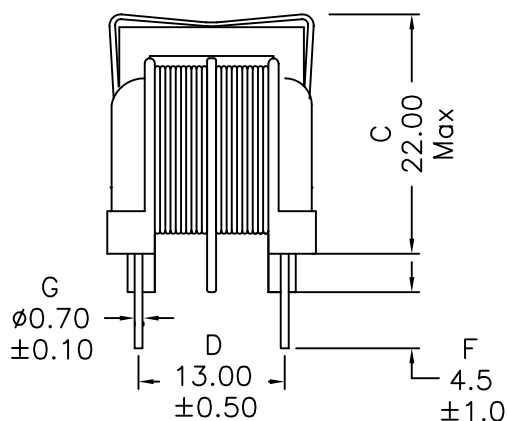
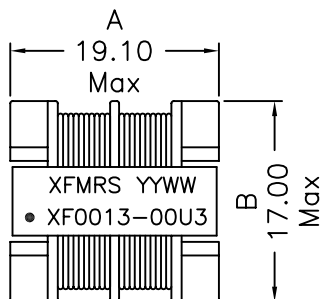
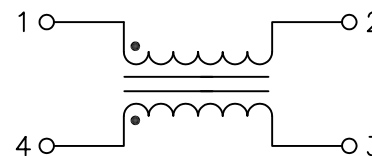


1. Mechanical Dimensions:



(BOTTOM VIEW)

2. Schematic:



3. Electrical Specifications:

OCL: 1.0mH Min @1KHz 1.0V, Each Wdg

Q: Pins 1-2 tbd Min @10KHz 100mV

DCR: 0.11 Ohms Max, Each Wdg

RATED CURRENT: 2.0Arms Max

Turns Ratio: (1-2):(4-3)=1:1±5%

TEMP RISE: 45°C Max

Hipot: 2000Vac Wdg to Wdg

750Vac Wdgs to Core

RATED VOLTAGE: 250Vrms Max

Notes:

1. Solderability: Leads shall meet MIL-STD-202G, Method 208H for solderability.
2. Flammability: UL94V-0
3. ASTM oxygen index: > 28%
4. Insulation System: Class F 155°C. UL file E151556
5. Operating Temperature Range: All listed parameters are to be within tolerance from -55°C to +105°C
6. Storage Temperature Range: -55°C to +125°C
7. Aqueous wash compatible
8. Electrical and mechanical specifications 100% tested
9. RoHS Compliant Component

XFMRS Inc www.XFMRS.com		Title: COMMON MODE CHOKE	
UNLESS OTHERWISE SPECIFIED TOLERANCES: .xx ±0.30 Dimensions in MM		P/N: XFO013-00U3	REV. A
SHEET 1 OF 1		DWN.	Jan-13-10
		CHK.	Jan-13-10
		APP.	Jan-13-10
		BW	

DOC REV: A/1

PROPRIETARY

Document is the property of XFMRS Group & is not allowed to be duplicated without authorization.