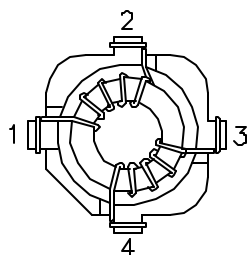
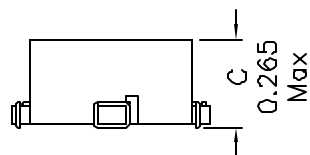
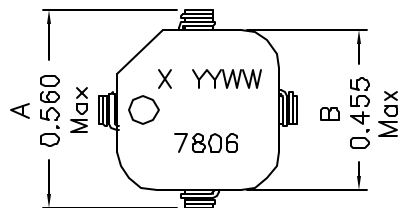
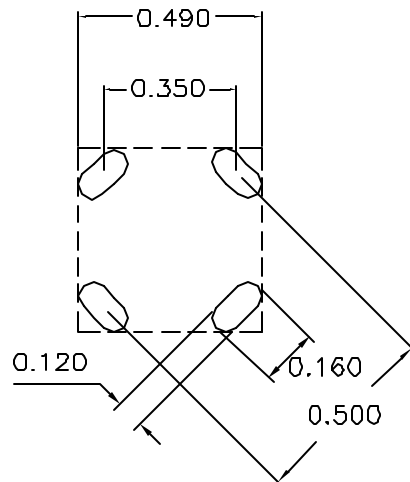


1. Mechanical Dimensions:



BOTTOM VIEW

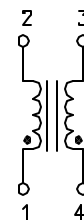


RECOMMENDED LAYOUT PATTERN
(TOP VIEW)

Notes:

1. Solderability: Leads shall meet MIL-STD-202G, Method 208H for solderability.
2. Flammability: UL94V-0
3. ASTM oxygen index: > 28%
4. Insulation System: Class F 155°C. UL file E151556
5. All listed parameters are to be within tolerance from -40°C to +160°C unless otherwise noted
6. Storage Temperature Range: -40°C to +160°C
7. Aqueous wash compatible
8. SMD Lead Coplanarity: ±0.004" (0.102mm)
9. Electrical and mechanical specifications 100% tested
10. RoHS Compliant Component
11. NO VARNISH REQUIRED
12. 260C reflow compatible

2. Schematic:



3. Electrical Specifications: @25°C

OCL: 648uH Min @100KHz, 0.1V Each Wdg (0°C to +160°C)
350uH Min @100KHz, 0.1V Each Wdg. (-40°C to 0°C)

Q: Pins 1-2 10 Min @100KHz, 0.1V

LL: Pins 1-2 5.10uH Typ @100KHz, 0.1V (Short 4-3)

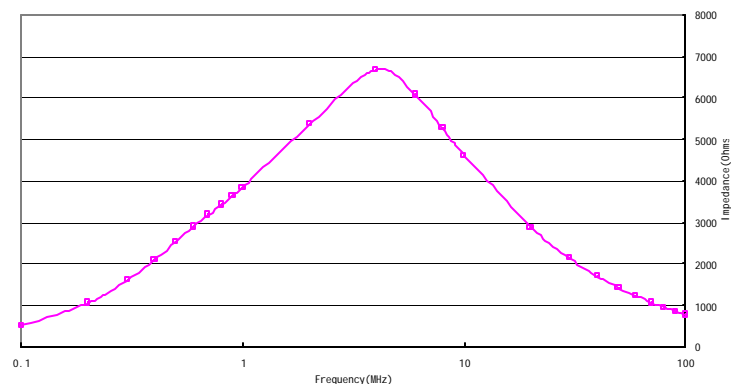
Cw/w: Pins 1-4 5.10pF Typ @100KHz, 0.1V

Current Rating: 1.20Arms

DC Res: 0.107 Ohms Typ Each Wdg.

Turns Ratio: Pins (1-2):(4-3)=1:1

Isolation: 300Vdc Min for 1 Second



XFMRs Inc. www.XFMRS.com	Title: Common Mode Choke		
	UNLESS OTHERWISE SPECIFIED	P/N: 7XF7806-CMC	REV. B
TOLERANCES: .xxx ±0.010	DWN.	Mei Chen	Oct-14-10
Dimensions in Inch	CHK.	YK Liao	Oct-14-10
SHT 1 OF 1	APP.	Joe Huff	Oct-14-10

DOC. REV. B/1