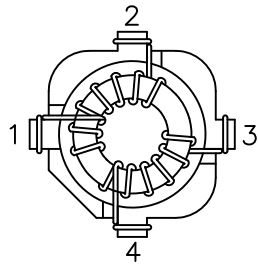
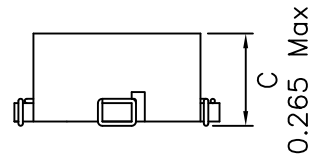
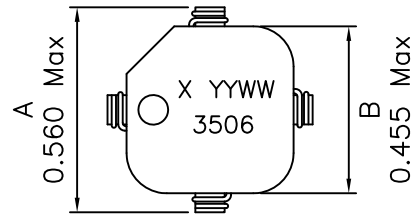
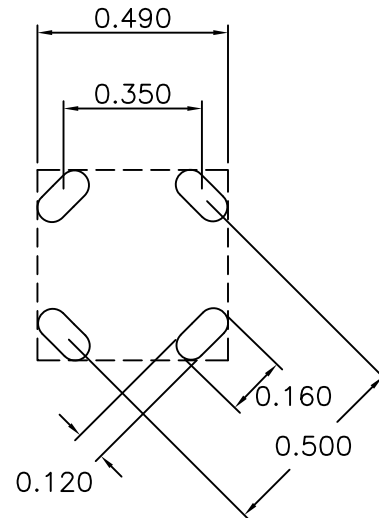


1. Mechanical Dimensions:



BOTTOM VIEW



RECOMMENDED LAYOUT PATTERN
(TOP VIEW)

2. Schematic:



3. Electrical Specifications: @25°C

- OCL: 350uH Min @100KHz, 0.10V Each Wdg
- Q: Pins 1-2 15 @100KHz, 0.10V
- DCR: 0.040 Ohms Typ, Each Wdg
- LL: Pins 1-2 3.0uH typ @100KHz 0.10V, Short Sec
- Cw/w: Pins 1-4 4.40pF typ @100KHz 0.10V
- Turns Ratio: (1-2):(4-3) = 1:1
- Rated Current: 2.00Arms Max
- Isolation: 300Vdc for 1 Min (wdg to wdg)

Notes:

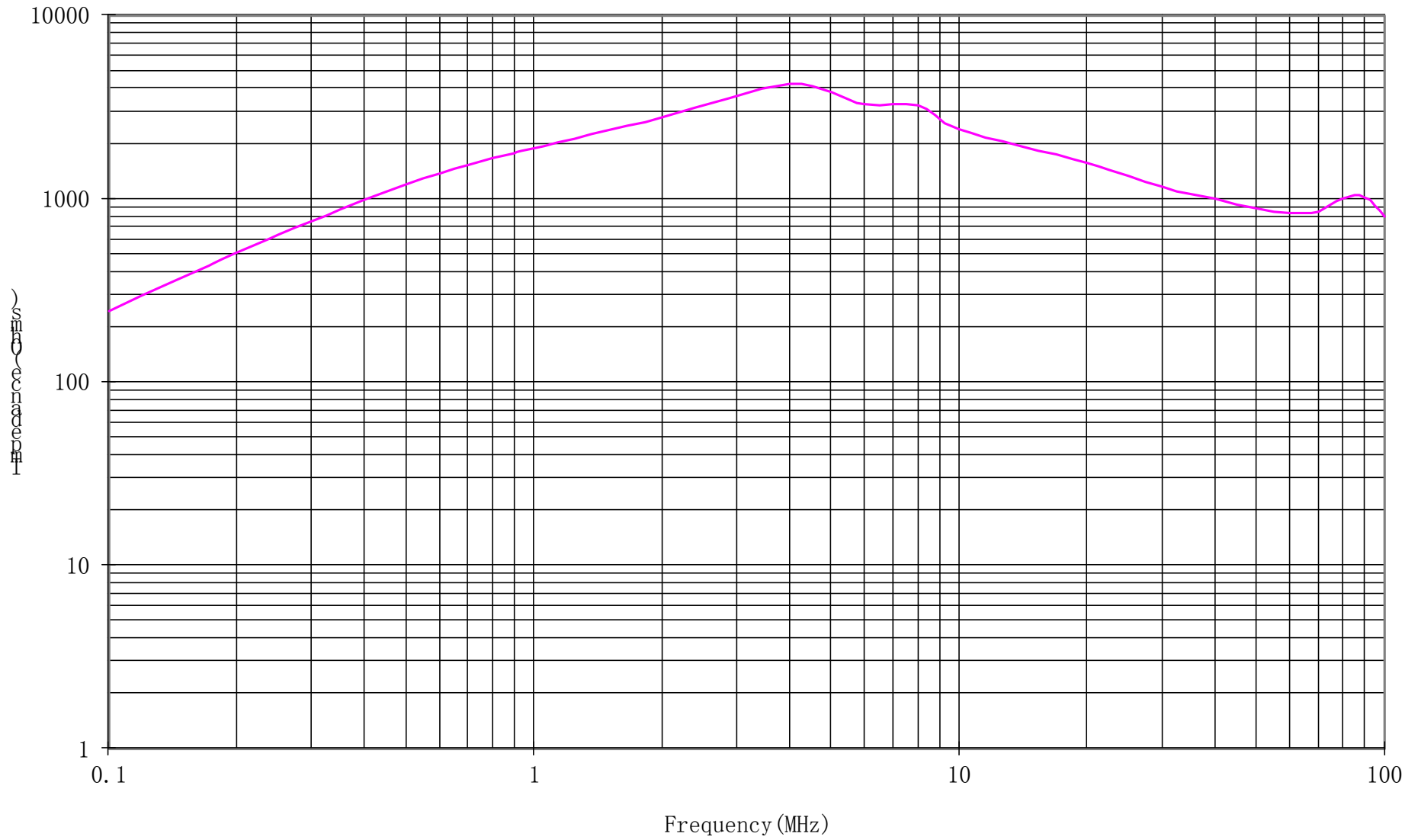
1. Solderability: Leads shall meet MIL-STD-202G, Method 208H for solderability.
2. Flammability: UL94V-0
3. ASTM oxygen index: > 28%
4. Insulation System: Class F 155°C. UL file E151556
5. Operating Temperature Range: All listed parameters are to be within tolerance from -40°C to +85°C
6. Storage Temperature Range: -55°C to +125°C
7. Aqueous wash compatible
8. SMD Lead Coplanarity: ±0.004*(0.102mm)
9. Electrical and mechanical specifications 100% tested
10. RoHS Compliant Component
11. No Varnish Required
12. Recommended IR Reflow peak temp of 250°C Max.

DOC. REV: A/1

XFMRs Inc. www.XFMRs.com	Title: Common Mode Choke		
	UNLESS OTHERWISE SPECIFIED TOLERANCES: .xxx ±0.010 Dimensions in Inch	P/N: 7XF3506-CMC	REV. A
SHEET 1 OF 2	APP. GL	YK Liao Sep-01-16	Sep-01-16

PROPRIETARY

Document is the property of XFMRs Group & is not allowed to be duplicated without authorization.



DOC. REV: A/1

XFMRs Inc. www.XFMRs.com	Title: Common Mode Choke		
	UNLESS OTHERWISE SPECIFIED		P/N: 7XF3506-CMC
TOLERANCES:	.xxx ±0.010		REV. A
Dimensions in Inch	DWN.	Yuan	Sep-01-16
SHEET 1 OF 2	CHK.	YK Liao	Sep-01-16
	APP.	GL	Sep-01-16

PROPRIETARY Document is the property of XFMRs Group & is not allowed to be duplicated without authorization.