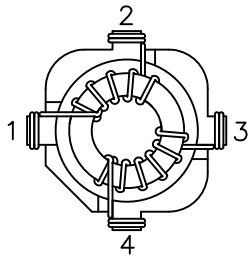
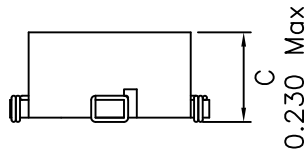
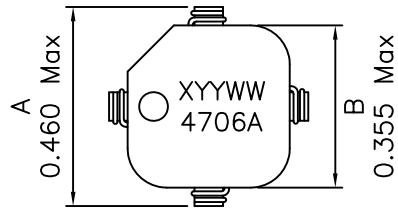
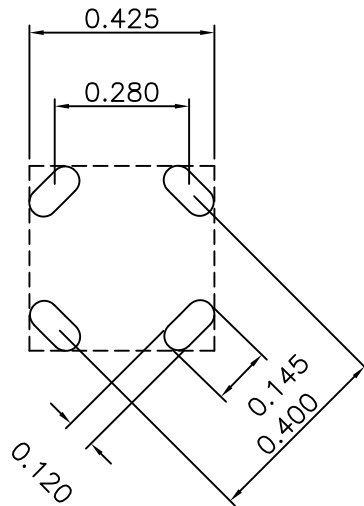


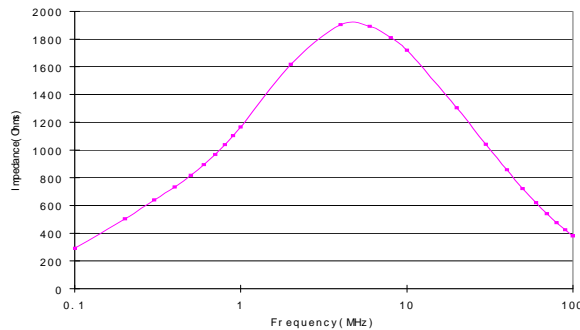
1. Mechanical Dimensions:



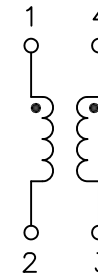
BOTTOM VIEW



RECOMMENDED LAYOUT PATTERN (TOP VIEW)



2. Schematic:



3. Electrical Specifications: @25°C

- OCL: 470uH-30/+50% @10KHz 0.1V (each, balance within 2% max)
- Q: Pins 1-2 8 Min @10KHz 0.1V
- Leakage L: Pins 1-2 1.6uH Typ @100KHz, 0.1V (tie 4-3)
- Irms: 1.5A Max (Based on 40°C temp rise)
- DCR: 0.060 Ohms Max (each)
- Hipot: 500Vac (Wdg to Wdg)

Notes:

1. Solderability: Leads shall meet MIL-STD-202G, Method 208H for solderability.
2. Flammability: UL94V-0
3. ASTM oxygen index: > 28%
4. Insulation System: Class F 155°C. UL file E151556
5. Operating Temperature Range: All listed parameters are to be within tolerance from -40°C to +85°C
6. Storage Temperature Range: -55°C to +125°C
7. Aqueous wash compatible
8. SMD Lead Coplanarity: ±0.004*(0.102mm)
9. Electrical and mechanical specifications 100% tested
10. RoHS Compliant Component

XFMRs Inc. www.XFMRs.com	Title: Common Mode Choke			
	UNLESS OTHERWISE SPECIFIED	P/N: 6XF4706A-CMC	REV. A	
TOLERANCES: .xxx ±0.010	DWN.	Yuan	Jan-27-16	
Dimensions in Inch	CHK.	YK Liao	Jan-27-16	
SHEET 1 OF 1	APP.	Joe Huff	Jan-27-16	

DOC. REV: A/4

PROPRIETARY

Document is the property of XFMRs Group & is not allowed to be duplicated without authorization.