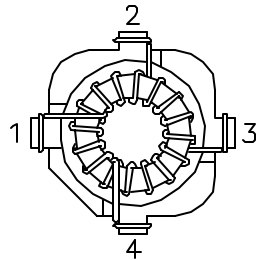
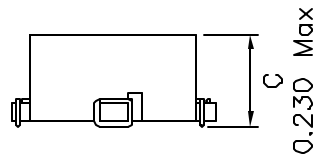
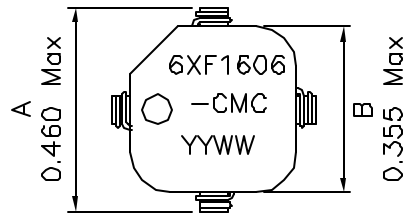
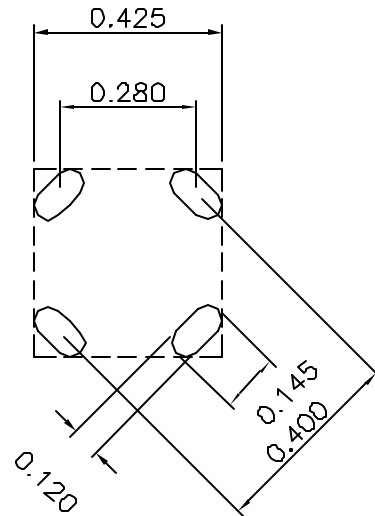


1. Dimensions:

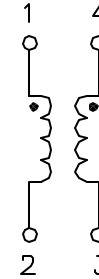


BOTTOM VIEW



RECOMMENDED LAYOUT PATTERN
(TOP VIEW)

2. Schematic:



3. Electrical Specifications: @25°C

OCL: 140uH Min @100KHz 0.1V, Each Wdg

Turns Ratio: Pins (1-2):(4-3)=1:1±2%

Leakage L: Pins 1-2 1.45uH Typ @100KHz 0.1V, Tie 3-4

Cw/w: Pins 1-4 3.0pF Typ @100KHz 0.1V

DCR: Pins 1-2 0.100 Ohms Typ

DCR: Pins 3-4 0.100 Ohms Typ

Hypot: 300Vdc Wdg-Wdg

Notes:

1. Solderability: Leads shall meet MIL-STD-202, Method 208D for solderability.
2. Flammability: UL94V-0
3. ASTM oxygen index: > 28%
4. Insulation System: Class F 155°C. UL file E151556
5. Operating Temperature Range: All listed parameters are to be within tolerance from -55°C to +105°C
6. Storage Temperature Range: -55°C to +125°C
7. Aqueous wash compatible
8. SMD Lead Coplanarity: ±0.004"(0.102mm)
9. Moisture Sensitivity: Level 3
10. Electrical and mechanical specifications 100% tested
11. RoHS Compliant Component

DOC. REV: A/1

PROPRIETARY

Document is the property of XFMRs Group & is not allowed to be duplicated without authorization.

XFMRs Inc. www.XFMRs.com	Title: Common Mode Choke		
	UNLESS OTHERWISE SPECIFIED TOLERANCES: .xxx ±0.010 Dimensions in Inch	P/N: 6XF1606-CMC	REV. A
SCALE 2:1 SHT 1 OF 1	APP. MS	CHK. 廖玉坤 Sep-08-05	Sep-08-05