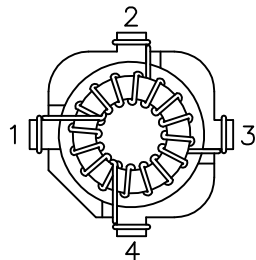
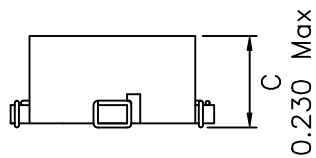
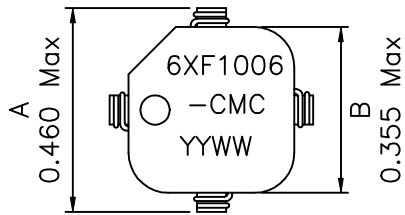
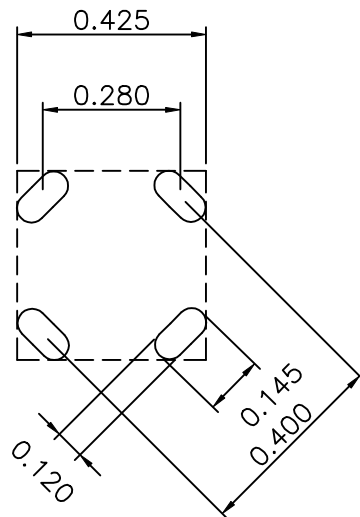


1. Dimensions:

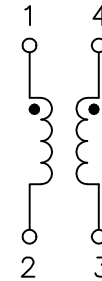


BOTTOM VIEW



RECOMMENDED LAYOUT PATTERN
(TOP VIEW)

2. Schematic:



3. Electrical Specifications: @25°C

OCL: 100uH±30% @10KHz, 0.1V (each)

Current Rating: 2.8Arms

Leakage L: 0.91uH @10KHz, 0.1V (for ref only)

Cw/w: 1.86pF @10KHz, 0.1V (for ref only)

DC Res.: 0.026 Ohms Max (each)

Isolation: 1250Vrms Wdg-Wdg, 1 Second

Notes:

1. Solderability: Leads shall meet MIL-STD-202, Method 208D for solderability.
2. Flammability: UL94V-0
3. ASTM oxygen index: > 28%
4. Insulation System: Class F 155°C. UL file E151556
5. Operating Temperature Range: -55°C to +125°C

DOC. REV: A/1

XFMRs Inc.	Title: Common Mode Choke		
	UNLESS OTHERWISE SPECIFIED	P/N: 6XF1006-CMC	REV. A
TOLERANCES: .xxx ±0.010	DWN.	李小锋	Feb-18-02
Dimensions in Inch	CHK.	廖玉坤	Feb-18-02
SCALE 2:1 SHT 1 OF 1	APP.	Joe Huff	Feb-18-02