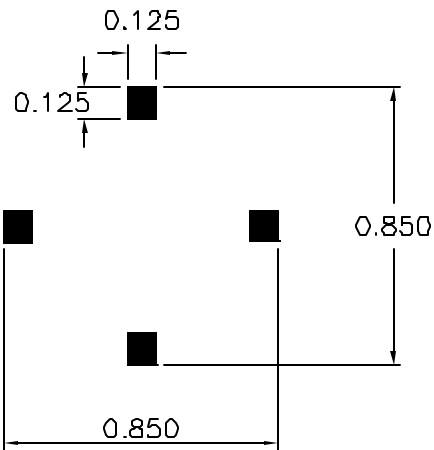
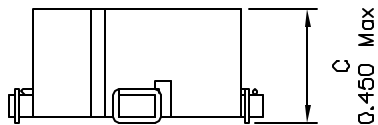
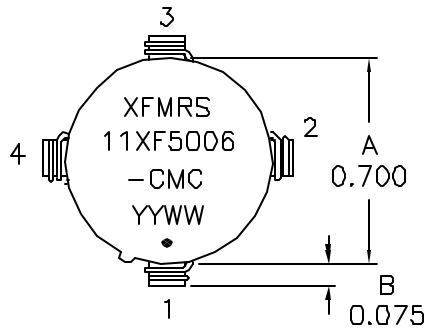
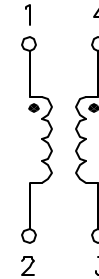


1. Mechanical Dimensions:



RECOMMENDED LAYOUT PATTERN
(TOP VIEW)

2. Schematic:



3. Electrical Specifications: @25°C

OCL: 500uH Min @100KHz 0.1V, Each Wdg

DCR: 0.010 Ohms Max, Each Wdg

Current Rating: 6.0Arms

Freq. Range: 4-40MHz @20dB Attenuation

Isolation: 500Vac, Wdg-Wdg for 1 Second

Notes:

1. Solderability: Leads shall meet MIL-STD-202G, Method 208H for solderability.
2. Flammability: UL94V-0
3. ASTM oxygen index: > 28%
4. Insulation System: Class F 155°C. UL file E151556
5. Operating Temperature Range: All listed parameters are to be within tolerance from -55°C to +105°C
6. Storage Temperature Range: -55°C to +125°C
7. Aqueous wash compatible
8. SMD Lead Coplanarity: ±0.004*(0.102mm)
9. Electrical and mechanical specifications 100% tested
10. RoHS Compliant Component

DOC REV: A/3

XFMRs Inc www.XFMRs.com	Title: Common Mode Choke		
	UNLESS OTHERWISE SPECIFIED TOLERANCES: .xxx ±0.010 Dimensions in Inch	P/N: 11XF5006-CMC	REV. A
SCALE 2:1 SHT 1 OF 1	DWN.	Juan Mao	Nov-03-05
	CHK.	YK Liao	Nov-03-05
	APP.	Joe Huff	Nov-03-05