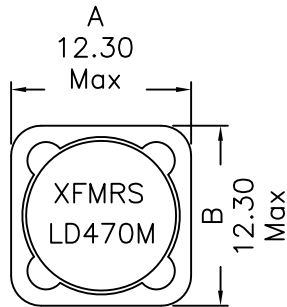
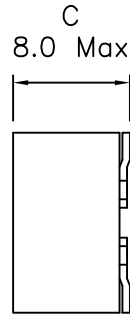


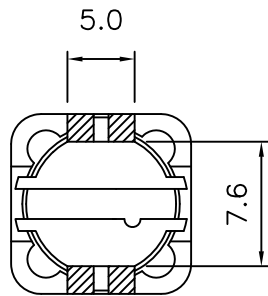
## 1. Mechanical Dimensions:



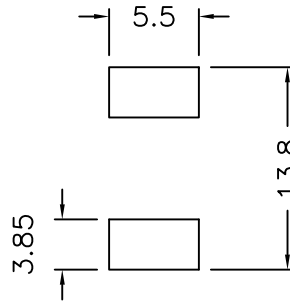
(TOP VIEW)



(SIDE VIEW)

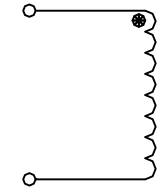


(BOTTOM VIEW)



(SUGGESTED MOUNTING PAD)

## 2. Schematic:



## 3. Electrical Specifications:@25°C

Inductance: 47uH±20% @1KHz, 1V

Q: tbdMin @100KHz, 0.1V

DCR: 0.078 Ohms Max

Rated Current: 3.25Arms (Based on 40°C rise)

Isat: 3.25Adc Max (Based on 25% drop in OCL)

### Notes:

1. Solderability: Leads shall meet MIL-STD-202G, Method 208H for solderability.
2. Flammability: UL94V-0
3. ASTM oxygen index: > 28%
4. Insulation System: Class F 155°C. UL file E151556
5. Operating Temperature Range: All listed parameters are to be within tolerance from -40°C to +85°C
6. Storage Temperature Range: -55°C to +125°C
7. Aqueous wash compatible
8. SMD Lead Coplanarity: ±0.004"(0.102mm)
9. Electrical and mechanical specifications 100% tested
10. RoHS Compliant Component

<b>XFMRs Inc.</b> www.XFMRs.com		Title: XFTPRH1207LD SERIES SHIELDED INDUCTORS		
UNLESS OTHERWISE SPECIFIED TOLERANCES: .xx ±0.30 Dimensions in MM	P/N: XFTPRH1207LD-470M		REV. A	
	DWN.	Xiany	May-02-13	
	CHK.	YK Liao	May-02-13	
SHEET 1 OF 1	APP.	BW	May-02-13	

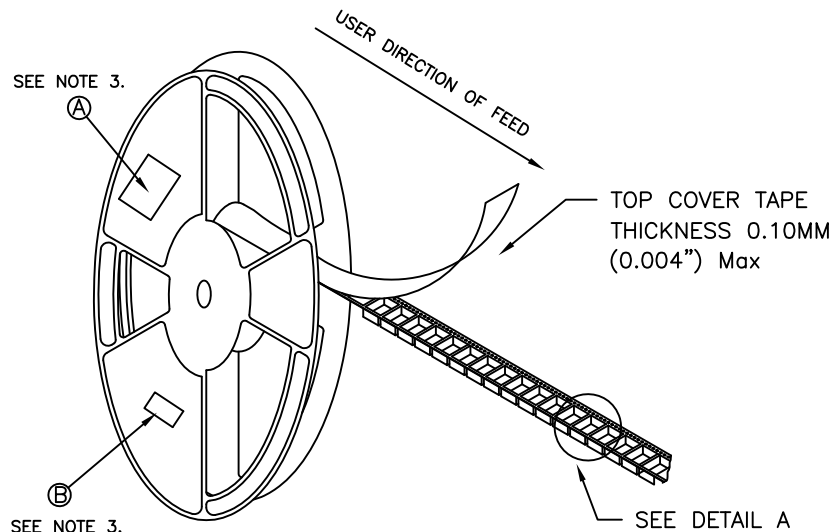
DOC REV: A/1

**PROPRIETARY** Document is the property of XFMRs Group & is not allowed to be duplicated without authorization.

**TAPE AND REEL SPECIFICATION:**

NOTES:

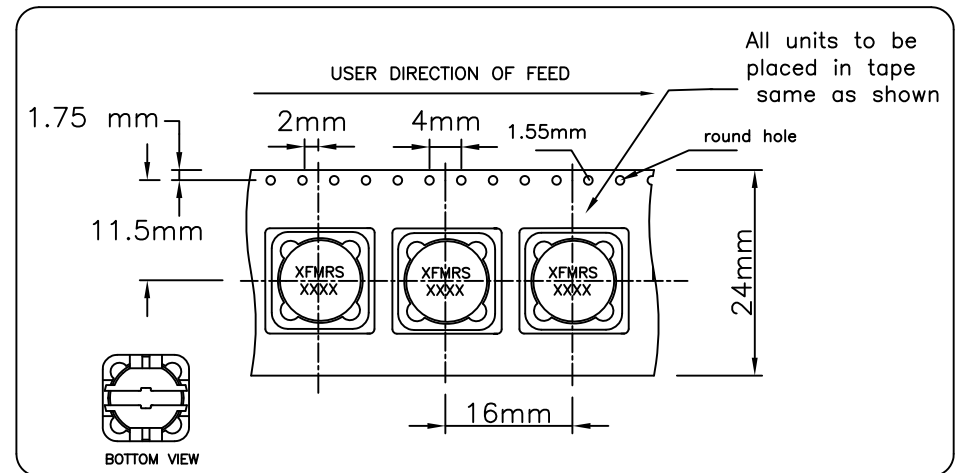
- 1) PROCESS IN ACCORDANCE WITH EIA-481-2 STANDARDS
  - \* TAPE LEADER DIMENSION 15.30" MIN.
  - \* TAPE TRAILER DIMENSION 6.30" MIN.
- 2) PARTS SHOULD BE PACKAGED IN ACCORDANCE WITH ESD GUIDELINES IN EIA-541.
- 3) REEL LABEL: 'A' \* PART NUMBER
  - \* QUANTITY
  - \* DATE CODE
 'B'- ANTI-STATIC CAUTION LABEL
- 4) 400PCS PER 13" REEL



REEL AND TAPE ORIENTATION

**13" REEL DIAMETER**

DETAIL A

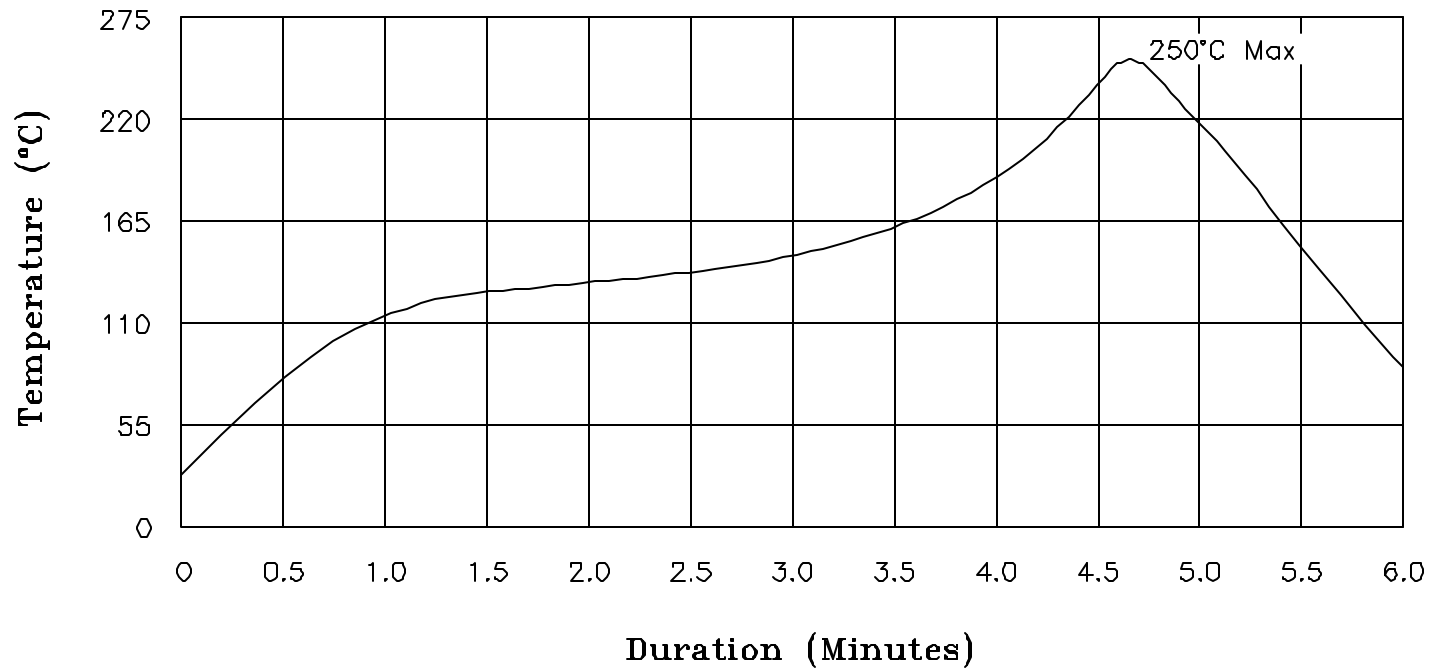


DOC. REV. A/2

<b>XFMRS Inc</b>	Title: T&R SPEC		
	UNLESS OTHERWISE SPECIFIED	P/N: XFTPRH1207	REV: A
	TOLERANCES: .xxs ±xxxxx	DWN. Kong	Apr-10-10
	Dimensions in mm	CHK. YK Liao	Apr-10-10
SHT 2 OF 2	APP. BW	Apr-10-10	

# XFMRs

## Recommended Infrared Reflow Temperature Profile for Select Parts



NOTES: Maximum duration at 250°+0/-5° shall be 10-15 seconds.  
 Maximum duration above 217° shall be 50-120 seconds.  
 ALL Temperatures refer to topside of the package, measured on the package body surface.

<b>XFMRs Inc</b> www.XFMRs.com	Title: <b>IR REFLOW CHART (250°C)</b>			
	UNLESS OTHERWISE SPECIFIED TOLERANCES: N/A		P/N: N/A	REV. A
	DWN.	Juan Mao	Dec-20-06	
	CHK.	YK Liao	Dec-20-06	
SHEET 1 OF 1	APP.	Joe Huff	Dec-20-06	