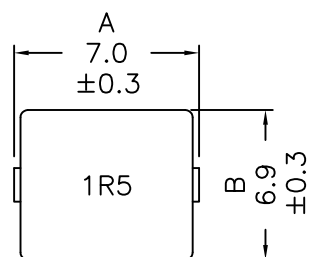
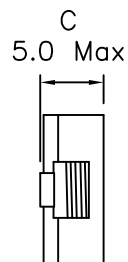


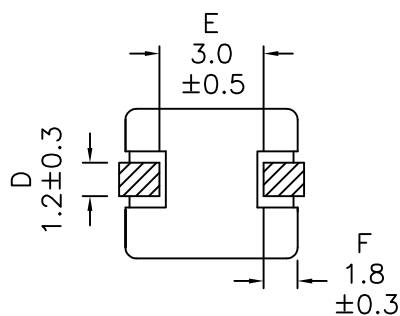
1. Mechanical Dimensions:



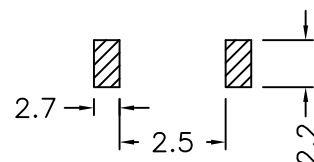
Top view



Side view

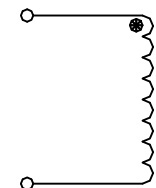


Bottom view



Typical Pad Layout

2. Schematic:



3. Electrical Specifications:

OCL: 1.50uH±20% @100KHz 0.25V

Q: 15 Min @100KHz 0.25V

DC Res: 6.6mOhms Max

Irms: 11A (Based on 40°C Temp Rise)

I_{sat}: 14.0A (Based on 30% Typ drop in OCL)

SRF : 50MHz Min

Notes:

- Solderability: Leads shall meet MIL-STD-202G, Method 208H for solderability.
- Flammability: UL94V-0
- ASTM oxygen index: > 28%
- Insulation System: Class F 155°C. UL file E151556
- Operating Temperature Range: All listed parameters are to be within tolerance from -40°C to +125°C
- Storage Temperature Range: -55°C to +125°C
- Aqueous wash compatible
- SMD Lead Coplanarity: ±0.004"(0.102mm)
- Electrical and mechanical specifications 100% tested
- RoHS Compliant Component

DOC. REV: A/1

XFMRs Inc www.XFMRs.com		Title: MAGNETICALLY SHIELDED HIGH CURRENT INDUCTOR		
UNLESS OTHERWISE SPECIFIED TOLERANCES: .xx ±0.25 Dimensions in MM	P/N: XFHCL6MD-1R5M	REV. A		
	DWN.	Feng	Mar-29-16	
SHEET 1 OF 1	CHK.	YK Liao	Mar-29-16	
	APP.	GL	Mar-29-16	

PROPRIETARY

Document is the property of XFMRs Group & is not allowed to be duplicated without authorization.