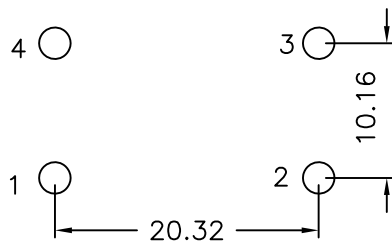
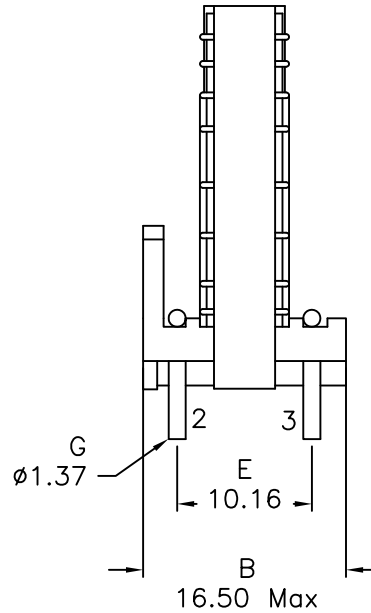
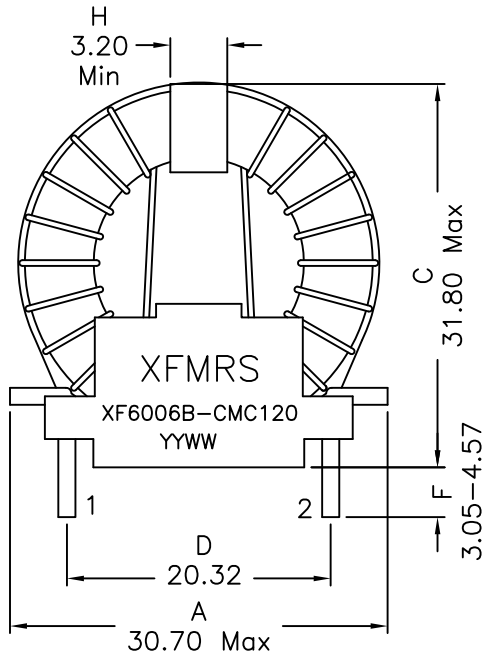
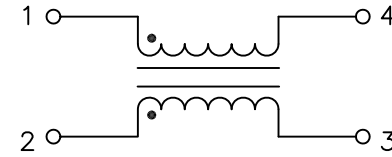


### 1. Mechanical Dimensions:



SUGGESTED FOOTPRINT

### 2. Schematic:



### 3. Electrical Specifications:

- OCL: 0.6mH Min @15.75KHz 0.1V, Each Wdg
- Q: Pins 1-4 10 Min @15.75KHz 0.1V
- LL: Pins 1-4 6.5uH Max @100KHz 0.1V (Short Pins 2-3)
- Rated Current: 15.0Arms
- DCR: 6.5mOhms Max, Each Wdg
- SRF: Pins 1-4 500KHz Min
- Isolation: 1500Vac Wdg to Wdg for 1 Second

Notes:

1. Solderability: Leads shall meet MIL-STD-202G, Method 208H for solderability.
2. Flammability: UL94V-0
3. ASTM oxygen index: > 28%
4. Insulation System: Class F 155°C. UL file E151556
5. Operating Temperature Range: All listed parameters are to be within tolerance from -40°C to +85°C
6. Storage Temperature Range: -55°C to +125°C
7. Aqueous wash compatible
8. Electrical and mechanical specifications 100% tested
9. RoHS Compliant Component

<b>XFMRs Inc</b> www.XFMRs.com	Title: <b>Common Mode Choke</b>		
	UNLESS OTHERWISE SPECIFIED TOLERANCES: .xx ±0.20 Dimensions in MM	P/N: XF6006B-CMC120	REV. A
	DWN.	Feng	Dec-03-12
	CHK.	YK Liao	Dec-03-12
SHT 1 OF 2	APP.	Joe Huff	Dec-03-12

DOC. REV: A/1