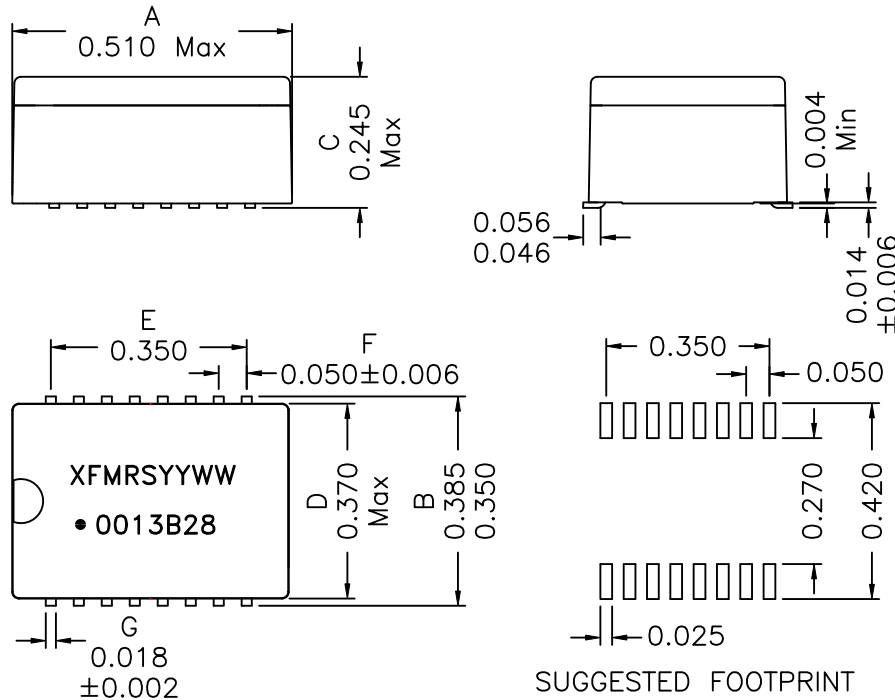
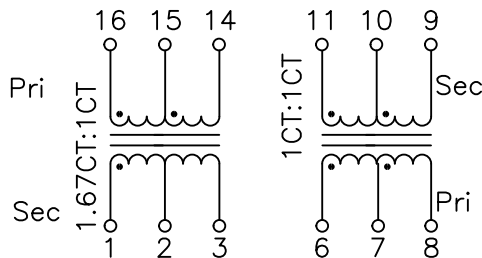


## 1. Mechanical Dimensions:



## 2. Schematic:



### Notes:

1. Solderability: Leads shall meet MIL-STD-202G, Method 208H for solderability.
2. Flammability: UL94V-0
3. ASTM oxygen index: > 28%
4. Insulation System: Class F 155°C. UL file E151556
5. Operating Temperature Range: All listed parameters are to be within tolerance from -40°C to +85°C
6. Storage Temperature Range: -55°C to +125°C
7. Aqueous wash compatible
8. SMD Lead Coplanarity: ±0.004" (0.102mm)
9. Electrical and mechanical specifications 100% tested
10. RoHS Compliant Component
11. Recommended IR Reflow peak temp of 245°C Max.

DOC. REV: B/1

## 3. Electrical Specifications:@25°C

ISOLATION VOLTAGE: 1500 VAC

URNS RATIO: (1-2-3):(16-15-14)=1.67CT:1CT±2%

URNS RATIO: (6-7-8):(11-10-9)=1CT:1CT ±2%

SEC OCL: Pins 1-3 1.0mH Min @10KHz 100mV @25°C

SEC OCL: Pins 11-9 1.0mH Min @10KHz 100mV @25°C

SEC OCL: Pins 1-3 600uH Min @10KHz 100mV @-40°C

SEC OCL: Pins 11-9 600uH Min @10KHz 100mV @-40°C

CW/W: 25pF Max @10KHz 100mV (Pri/Sec)

LL: Pins 16-14 0.80uH Max @100KHz 100mV

Short P(14&16)

LL: Pins 6-8 0.80uH Max @100KHz 100mV

Short P(6&8)

DC Res.: 0.80 Ohms Max (each wdg)

LONGITUDINAL BALANCE: 35dB Typ @1.544 MHz

Return Loss: 50-100KHz 100KHz-2MHz 2-3MHz

Tx 9dB Min 15dB Min 11dB Min

Rx 12dB Min 18dB Min 14dB Min

Crosstalk Atten.: 50dB Min 100KHz-10MHz

CMRR: 50dB Min @1MHz

<b>XFMRS®</b> www.XFMRS.com		Title: SMD T1/E1 ISOLATION MODULE	
UNLESS OTHERWISE SPECIFIED TOLERANCES: .xxx ±0.010 Dimensions in Inch	P/N: XF0013B28		REV. B
	DWN.	Yu	Apr-25-22
	CHK.	YK Liao	Apr-25-22
SHEET 1 OF 1	APP.	TCH	Apr-25-22

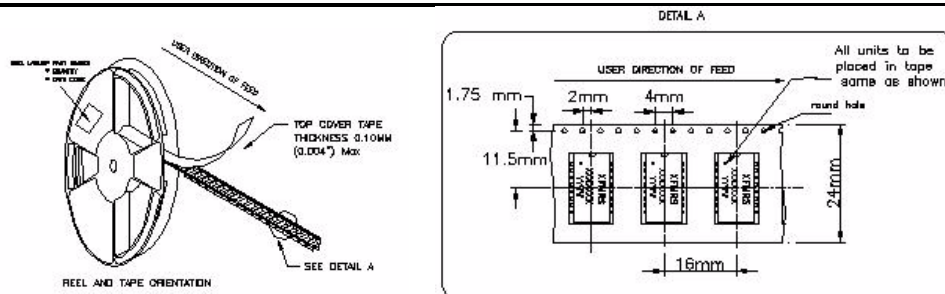
# XFMRS

## EXPENDABLE PACKAGING INFORMATION / QUALIFICATION FORM

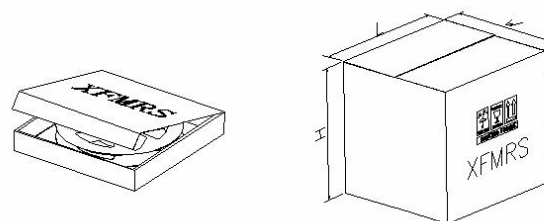
CONCEPT

GENERAL INFORMATION		SUPPLIER INFORMATION		
Part Numbe:	95-N16P-LP-WT	Company Name:	XFMRS	
Part Description:	Standard 16pin Lpin parts	Address Line 1:	UNIT G-J, 3/F, BLK 1, GOLDEN DRAGON IND CTR	
Weight (lbs.):	0.00264 lbs.approx	State / ZIP:	152-160 TAI LIN PAI ROAD	
T&R Notes: <ul style="list-style-type: none"> <li>1) PROCESS IN ACCORDANCE WITH EIA-481-2 STANDARDS                             <ul style="list-style-type: none"> <li>* TAPE LEADER DIMENSION 15.30" MIN.</li> <li>* TAPE TRAILER DIMENSION 6.30" MIN.</li> </ul> </li> <li>2) PARTS SHOULD BE PACKAGED IN ACCORDANCE WITH ESD GUIDELINES IN EIA-541.</li> <li>3) REEL LABEL: 'A' * PART NUMBER * QUANTITY * DATE CODE</li> </ul>		Country:	HONG KONG, CHINA	
			Program Manager:	Peggy Yiu
			Contact E-mail:	<a href="mailto:pyiu@xfmrs.com.hk">pyiu@xfmrs.com.hk</a>
			Contact Phone:	852 2423 1689

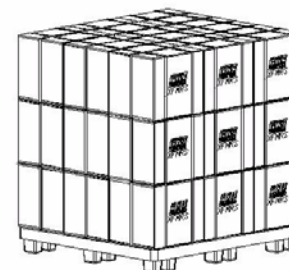
PRIMARY PACKAGING	
Packaging Type:	PS T&R
Dimnsions(cm):	L 33.0   W 33.0   H 2.4
Weight:	1.034 lbs. approx
QPC (Parts Per Reel)	500 pcs.
Total Weight w/parts:	2.35 lbs.
Banding / Shrink / Wrap:	BOPP Wrap
Other:	N/A



SECONDARY PACKAGING	
Packaging Type:	Paper Box
Dimnsions(cm):	L 40.0   W 36.5   H 36.5
Weight:	1.89 lbs.
Boxes per Unit Load:	5000 pcs.
Total weight w/Parts (lbs):	25.93 lbs.approx
Banding / Shrink / Wrap:	BOPP Wrap / PP Banding
Other:	N/A



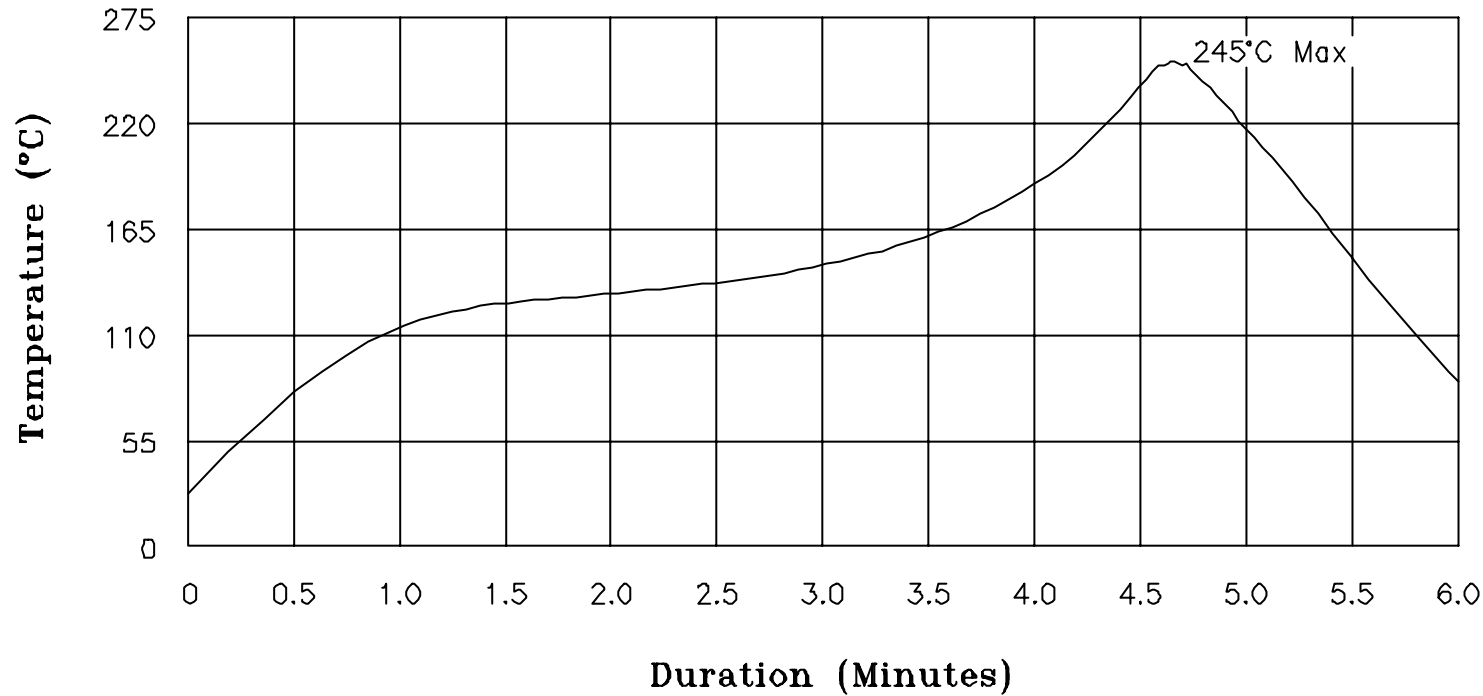
SHIPPING INFORMATION	
Packaging Type:	PE Pallet
Unit Load dims(cm):	L 120   W 100   H 163
Weight:	16.72 lbs.
Number of box Loads:	24 box.
Number of Parts:	120000 pcs.
Load weight total (lbs):	639.09 lbs.approx
Banding / Shrink / Wrap:	PE Shrink



PACKAGING APPROVAL		Drafted	Checked	Approved	Rev	Date
Internal Document Manufacture / Q.A. / Process Instructions		Kong	Liao	GL	A/1	Jan-26-18

# XFMRs

## Recommended Infrared Reflow Temperature Profile for RoHS Compliant Parts



NOTES: Maximum duration at 245°+0/-5° shall be 10-15 seconds.  
 Maximum duration above 217° shall be 50-120 seconds.  
 ALL Temperatures refer to topside of the package, measured on the package body surface.

<b>XFMRs Inc</b> www.XFMRs.com	Title: <b>IR REFLOW CHART</b> <b>(RoHS Compliant parts)</b>		
	UNLESS OTHERWISE SPECIFIED TOLERANCES: N/A		P/N: N/A
	DWN.	Juan Mao	Dec-20-06
	CHK.	YK Liao	Dec-20-06
SHEET 1 OF 1	APP.	Joe Huff	Dec-20-06