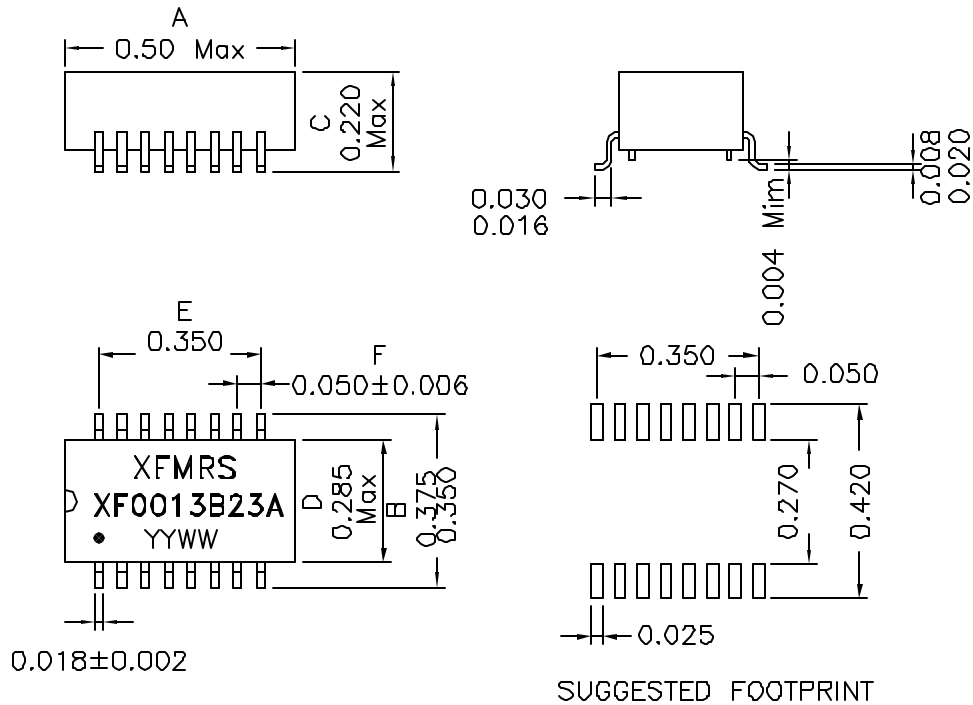
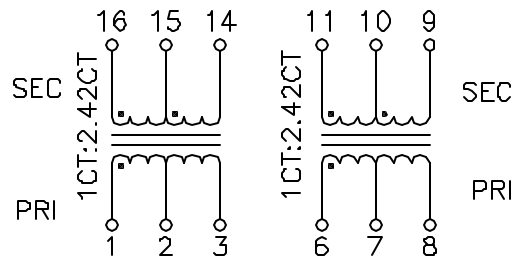


1. Dimensions:



2. Schematic:



3. Electrical Specifications: @25°C

Isolation Voltage: 1500 VAC

Turns Ratio: (1-2-3):(16-15-14)=1CT:2.42CT ±3%

Turns Ratio: (6-7-8):(11-10-9)=1CT:2.42CT ±3%

PRI OCL: 1.2mH Minimum @100KHz 50mV

Cw/w: 25pF Maximum @100KHz 50mV (Pri/Sec)

Leakage Inductance: 0.6uH Maximum @100KHz 50mV
@PRI, WITH SEC SHORTED

PRI DC Resistance: 0.70 Ohms Maximum

SEC DC Resistance: 1.20 Ohms Maximum

CROSSTALK (0.5-5MHz): -65dB Typ

Notes:

- Solderability: Leads shall meet MIL-STD-202, Method 208D for solderability.
- Flammability: UL94V-0
- ASTM oxygen index: > 28%
- Insulation System: Class F 155°C, UL file E151556
- Operating Temperature Range: All listed parameters are to be within tolerance from -40°C to +85°C
- Storage Temperature Range: -55°C to +125°C
- Aqueous wash compatible
- SMD Lead Coplanarity: ±0.004" (0.102mm)
- Moisture Sensitivity: Level 3
- Electrical and mechanical specifications 100% tested
- RoHS Compliant Component

DOC. REV: A/8

PROPRIETARY Document is the property of XFMRs Group & is not allowed to be duplicated without authorization.

XFMRs Inc www.XFMRs.com		Title: SMD T1/E1 ISOLATION MODULE	
UNLESS OTHERWISE SPECIFIED		P/N: XF0013B23A	REV. A
TOLERANCES: .xxx ±0.010		DWN. 罗振江	Dec-27-04
Dimensions in Inch		CHK. 廖玉坤	Dec-27-04
SHEET 1 OF 1		APP. J Ng	Dec-27-04