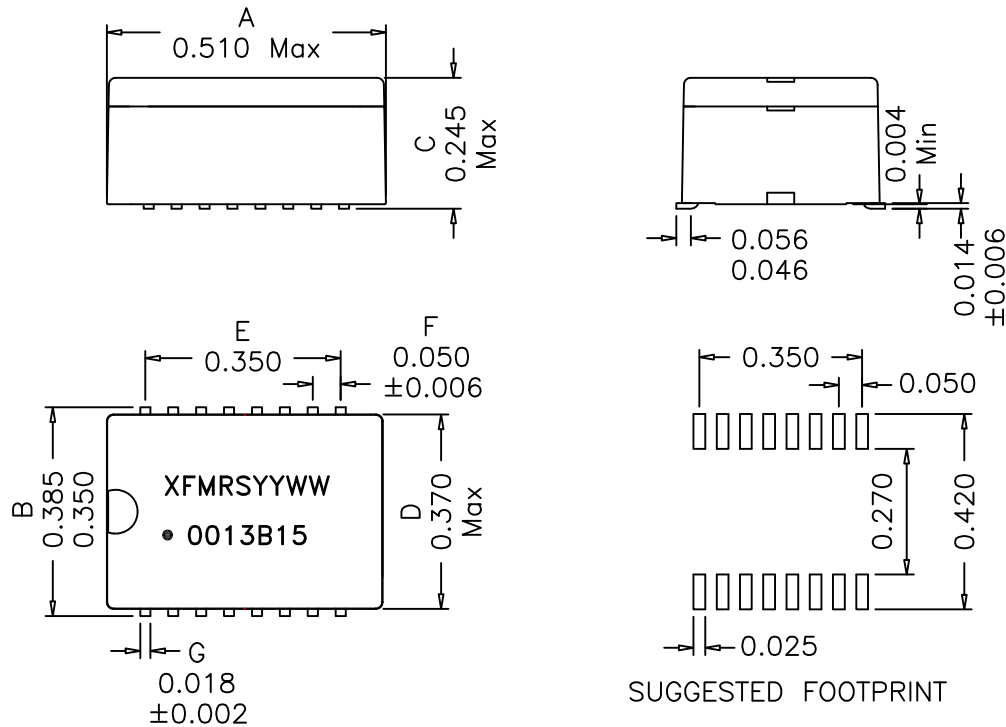


## 1. Mechanical Dimensions:



## 3. Electrical Specifications: @25°C

Isolation Voltage: 1500Vac, 2 Seconds

Turns Ratio: (16-15-14):(1-2-3)=1CT:1CT±2%

(6-7-8):(11-10-9)=1CT:2CT±2%

OCL: Pins 16-14 1.2mH Min @100KHz 50mV

Pins 6-8 1.2mH Min @100KHz 50mV

Q: Pins 6-8 16-14 5 Min @10KHz 50mV

Cw/w: 30pF Max @100KHz 50mV (Pri/Sec)

Pri LL: 0.6uH Max @100KHz 50mV (short Secondary)

PRI DC Res: 0.70 Ohms Max

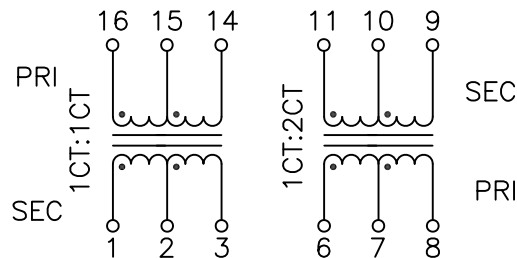
DC Res: Pins 1-3 0.70 Ohms Max

Pins 11-9 1.15 Ohms Max

### Notes:

1. Solderability: Leads shall meet MIL-STD-202G, Method 208H for solderability.
2. Flammability: UL94V-0
3. ASTM oxygen index: > 28%
4. UL Recognized Component, file #E165866, category WYQQ2.
5. Operating Temperature Range: All listed parameters are to be within tolerance from -40°C to +85°C
6. Storage Temperature Range: -55°C to +125°C
7. Aqueous wash compatible
8. SMD Lead Coplanarity: ±0.004"(0.102mm)
9. Electrical and mechanical specifications 100% tested
10. RoHS Compliant Component

## 2. Schematic:



DOC. REV: C/3

<b>XFMRS Inc.</b> <a href="http://www.XFMRS.com">www.XFMRS.com</a>	Title: T1/CEPT/DS3 Surface Mount Transformers		
	UNLESS OTHERWISE SPECIFIED TOLERANCES: .xxx ±0.010 Dimensions in Inch	P/N: XF0013B15 DWN. CHK.	Yuan YK Liao BSJ
SHT 1 OF 1	APP.		

**PROPRIETARY**

Document is the property of XFMRS Group & is not allowed to be duplicated without authorization.