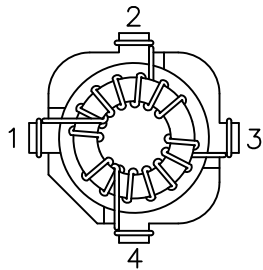
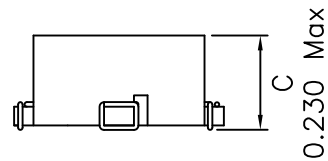
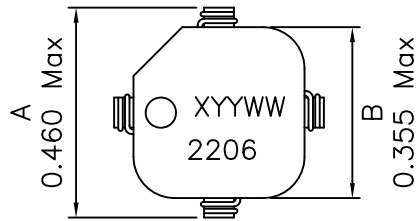
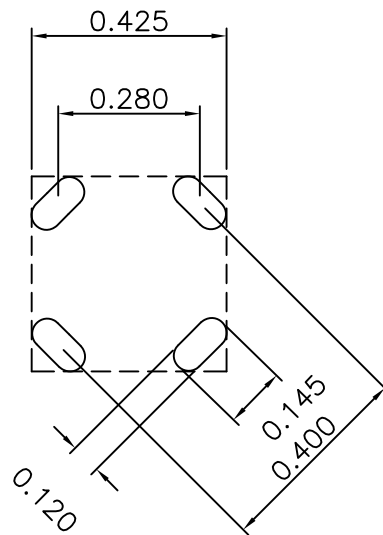


1. Dimensions:

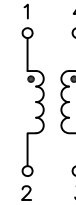


BOTTOM VIEW



RECOMMENDED LAYOUT PATTERN
(TOP VIEW)

2. Schematic:



3. Electrical Specifications: @25°C

OCL: 230uH Min @100KHz 0.1V, Each Wdg

Q: 5 Min @10KHz 0.1V, Each Wdg

Irrated: 1.85Arms Max (Based on 40°C Temp Rise)

LL: Pins 1-2 1.75uH Typ @100KHz 0.1V, Short 4-3

Cw/w: Pins 1-4 3.4pF Typ @ 100KHz, 0.1V

DCR: 0.044 Ohms Max, Each Wdg

Hipot: 300Vdc Wdg to Wdg 1 Second

Turns Ratio: Pins (1-2):(4-3)=1:1±2%

SRF:P1-2 3MHz Min

Notes:

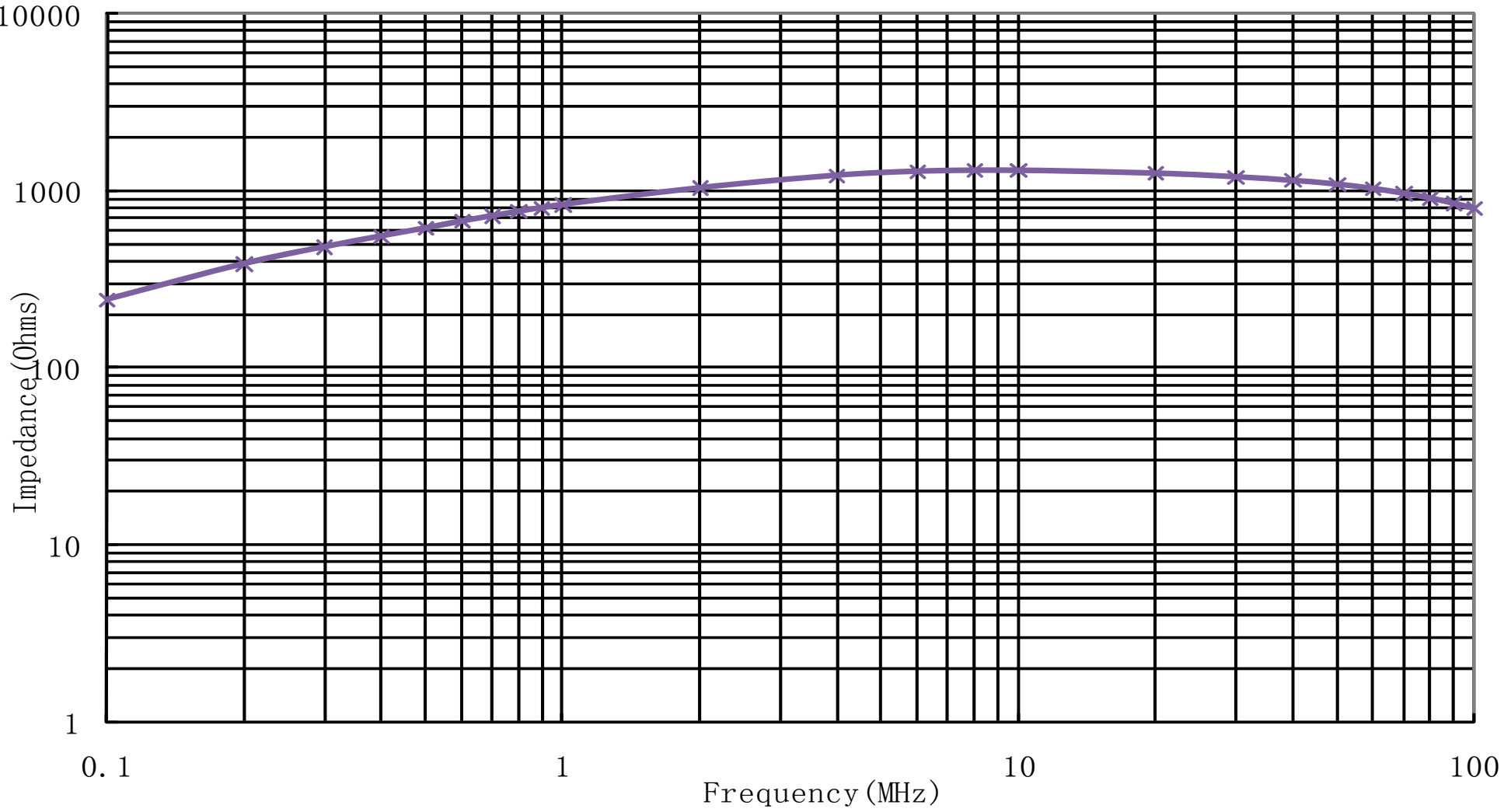
1. Solderability: Leads shall meet MIL-STD-202G,
2. Method 208H for solderability.
3. Flammability: UL94V-0
4. ASTM oxygen index: > 28%
5. Insulation System: Class F 155°C. UL file E151556
6. Operating Temperature : -40°C to +85°C
7. Storage Temperature Range: -55°C to +125°C
8. Aqueous wash compatible
9. SMD Lead Coplanarity: 0.004"(0.102mm) Max
9. Electrical and mechanical specifications 100% tested
10. RoHS Compliant Component
11. Recommended IR Reflow peak temp of 250°C Max.
12. AEC-Q200 Certified Product

XFMRs Inc www.XFMRs.com	Title: Common Mode Choke		
	UNLESS OTHERWISE SPECIFIED	P/N: 6XF2206-CMC	REV. A
TOLERANCES: .xxx ±0.010	DWN.	Huo	Sep-18-17
Dimensions in Inch	CHK.	YK Liao	Sep-18-17
SCALE 2:1 SHT 1 OF 2	APP.	GL	Sep-18-17

DOC. REV: A/6

PROPRIETARY

Document is the property of XFMRs Group & is not allowed to be duplicated without authorization.



DOC. REV: A/6

XFMRs Inc www.XFMRs.com	Title: Common Mode Choke		
	UNLESS OTHERWISE SPECIFIED TOLERANCES: .xxx ±0.010 Dimensions in Inch	P/N: 6XF2206-CMC	REV. A
SCALE 2:1 SHT 2 OF 2	DWN.	Huo	Sep-18-17
	APP.	YK Liao	Sep-18-17
		GL	Sep-18-17

PROPRIETARY Document is the property of XFMRs Group & is not allowed to be duplicated without authorization.