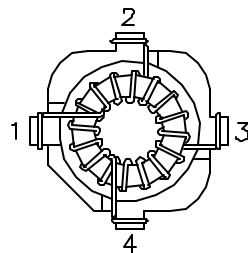
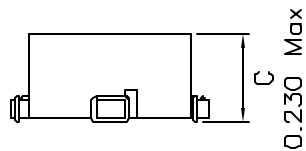
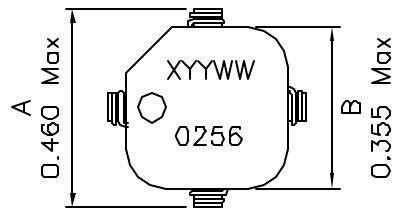
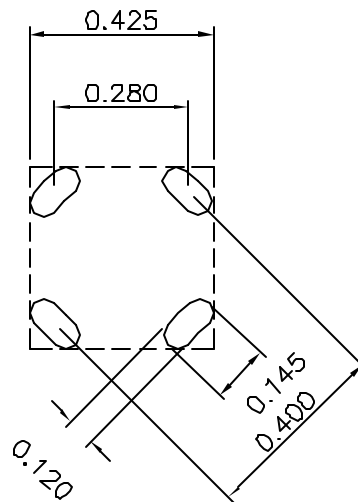


1. Mechanical Dimensions:

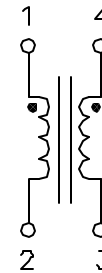


BOTTOM VIEW



RECOMMENDED LAYOUT PATTERN
(TOP VIEW)

2. Schematic:



3. Electrical Specifications: @25°C

OCL: 25uH Min @100KHz, 0.1V (each)

OCL: 30uH Typ @100KHz, 0.1V (each)

Q: 1.5 Min @100KHz, 0.1V (each)

Irms: 5.35A Max (Based on 40°C temp rise)

LL: Pins 1-2 0.22uH Typ @100KHz 0.1V Short Pins 3-4

DCR: 0.005 Ohms Typ (each)

Cw/w: Pins 1-4 2.0pF Typ @100KHz 0.1V

HIPOT: 300Vdc for 1 Min (Wdg to Wdg)

Notes:

1. Solderability: Leads shall meet MIL-STD-2026, Method 208H for solderability.
2. Flammability: UL94V-0
3. ASTM oxygen index: > 28%
4. Insulation System: Class F 155°C, UL file E151556
5. Operating Temperature Range: All listed parameters are to be within tolerance from -40°C to +85°C
6. Storage Temperature Range: -55°C to +125°C
7. Aqueous wash compatible
8. SMD Lead Coplanarity: ±0.004*(0.102mm)
9. Electrical and mechanical specifications 100% tested
10. RoHS Compliant Component

DOC. REV: B/2

XFMRs Inc. www.XFMRs.com	Title: Common Mode Choke		
	P/N: 6XF0256-CMC	REV. B	
UNLESS OTHERWISE SPECIFIED TOLERANCES: .xxx ±0.010 Dimensions in Inch	DWN.	Feng	Mar-28-11
	CHK.	YK Liao	Mar-28-11
SHT 1 OF 1	APP.	Joe Huff	Mar-28-11